



People  
Innovation  
Excellence



# THE WORLD IS OUR CLASSROOM

GLOBAL - INNOVATIVE - RELEVANT



## Admission Brochure for Non-Resident International Students Batch 2022

BINUS International Undergraduate Programs in English



AWARDED  
WORLD'S 5-STAR  
UNIVERSITY  
BY QS



Engineering  
Accreditation  
Commission



t. +6221 534 5830 Ext. 1325

e. [global@binus.edu](mailto:global@binus.edu)

@BinusGlobal



BINUSUniversity





























































































































































































































































































































# TABLE OF CONTENTS

BINUS UNIVERSITY INTERNATIONAL	1
Table of Majors and Streamings	
Single and Double Degree Tracks	2
4+0 Tracks	4
BINUS International Undergraduate Programs (in English)	6
Tuition Fees	10
Accommodation and Fees	11
Living Cost Estimation	13
Admission Process and Requirements	14
Scholarships	16
Visa Process	17

# WELCOME TO BINUS UNIVERSITY INTERNATIONAL

## THE OLDEST INTERNATIONAL CAMPUS IN THE COUNTRY!

Since 2001, BINUS UNIVERSITY INTERNATIONAL (BI) has been providing world-class international undergraduate programs delivered fully in English in partnership with the leading foreign higher education institutions in Australia, Asia, Europe and the U.S. As the university's exclusive international campus (JWC and FX) in the Senayan business district, BI hosts double degree (4+0, 3+1, and 2+2) undergraduate programs of:

**AACSB accredited BINUS BUSINESS SCHOOL (BBS)**

**Faculty of Computing and Media**

**Faculty of Economics and Communication**

**BINUS NORTHUMBRIA SCHOOL OF DESIGN (BNSD).**

These are 4-year programs running a 3+1 Enrichment Program where students study overseas, volunteer, conduct an internship, research project, or participate in an incubator over 2 semesters to complement their classroom knowledge with real-life experience. On top of that, the hybrid-modular curriculum and CIDER PARK idea incubator facilitate integrative project-based and solution-oriented learning. The following majors are available:

**Computer Science**

**Business Information Systems**

**Communication**

**Finance International Program**

**International Business**

**Business Management & Marketing**

**Fashion & Graphic Design.**

Streamings (specializations within the major are plentiful.)




BI programs are the oldest international programs in the country with rigorous quality standards. This reputation is spreading internationally with BINUS hosting some 600 visiting international students annually and a growing number of full degree international students coming from over 30 countries around the world, mainly from Asia, Africa, Europe, and the Middle East. Alongside a number of other support departments, dedicated International Student Recruitment unit and International Office support students from the academic and engagement perspective throughout their stay at BINUS.





# TABLE OF MAJORS & STREAMINGS\* SINGLE AND DOUBLE DEGREE TRACKS

## BINUS UNIVERSITY INTERNATIONAL UNDERGRADUATE PROGRAMS IN ENGLISH

Major	Streaming	Degree				
		Single	Title	Double	Title	Partner
Business Information Systems  	Business Information Systems	v	S.Kom.			
	Information Technology			v	S.Kom. & BIT	Queensland University of Technology, Australia
	International Business			v	S.Kom. & BA	Cologne Business School, Germany
	Information Technology Management for Business (Honors)			v	S.Kom. & BSc (Hons)	Northumbria University, Newcastle, United Kingdom
	Master Track					
	Business Information Systems (Master Track)				S.Kom. & Master of Science in selected concentration (MCom, MMgt, MInfSystMngt)	Macquarie University, Australia
Communications	Entertainment Communications	v	S.I.kom.		S.I.Kom. & BA (Hons)	Northumbria University, Newcastle, United Kingdom
	Public Relations	v		v		
	Journalism	v		v		
Computer Science  GPU EDUCATION CENTER	Computer Science	v	S.Kom.		S.Kom. & BSc (Hons)	Nottingham University. UK
	Pervasive Games Technology	v				
	Computer Science			v	S.Kom. & BInfoTech	RMIT University, Australia
	Artificial Intelligence			v		
	Information Technology			v	S.Kom. & BCompSc	University of Wollongong, Australia
Fashion	Fashion Design (4+0 / 3+1)			v	S.Sn & BA (Hons)	Northumbria University, Newcastle, United Kingdom
	Fashion Management (4+0 / 3+1)			v		
Graphic Design & Interactive Digital Media	Graphic Design (4+0 / 3+1)			v		
	Interactive Digital Media (4+0 / 3+1)			v		

\* The streamings available based on 2022 academic year.





# TABLE OF MAJORS & STREAMINGS\* DOUBLE DEGREE TRACKS

BINUS UNIVERSITY INTERNATIONAL UNDERGRADUATE PROGRAMS IN ENGLISH

Major	Streaming	Degree				
		Single	Title	Double	Title	Partner
Business Management & Marketing	Innovation & Entrepreneurship (4+0/3+1)			v	S.E. & BBus	University of Newcastle, Australia
	International Business			v	S.E. & BA	Cologne Business School, Germany
	International Business			v	S.E. & BBA	Saxion University of Applied Science, Netherlands
	International Hospitality & Tourism Management			v	S.E. & BA (Hons)	Bournemouth University, UK
	Business & Management			v		
	Marketing			v	S.E. & BBus	Queensland University of Technology, Australia
	Management			v	S.E. & BBus	Solbridge, Woosung University, South Korea
	Business Administration			v	S.E. & BBA	
	Marketing Management			v	S.E. & BCom	Macquarie University, Australia
	Marketing & Consumer Insight			v	S.E. & BCom	
	Master Track					
	Business Management & Marketing (Master Track)**			v	S.E. & BCom & Master in Selected Concentration (MCom/MMgt)	University of Newcastle, Australia
				Macquarie University, Australia		
Finance  	Business Finance (4+0/3+1)			v	S.E. & BCom	University of Newcastle, Australia
	Strategic Finance			v	S.E. & BA	Cologne Business School, Germany
	Business Finance & Financial Technology			v	S.E. & BCom	University of New South Wales (UNSW), Australia
	Applied Finance			v		Victoria University of Wellington, NZ
	Master Track					
	Finance (Master Track)**			v	S.E. & BCom & MCom	University of Newcastle, Australia
						Macquarie University, Australia
International Business	Innovation & Entrepreneurship (4+0/ 3+1)			v	S.E. & BBus	University of Newcastle, Australia
	Commerce & Management			v	S.E. & BA (Hons)	Bournemouth University, UK
	Business Management with Entrepreneurship			v		Edinburgh Napier University, UK
	International Business			v	S.E. & BA	Cologne Business School, Germany
	Business Administration			v	S.E. & BBA	Solbridge, Woosung University, South Korea
	Business Administration			v		Ningbo University, China,
	Commerce & Management			v	S.E. & BCom	Victoria University of Wellington, New Zealand
	Commerce & Management			v		University of New South Wales, Australia
	Master Track					
	Applied Business Analytics			v	S.E. & MSc	Boston University Metropolitan College, US

\* The streamings available based on 2022 academic year.



## DESIGN YOUR LIFE HERE



# Design

MAJOR	STREAMING (4+0 pathway/3+1 pathway)	DEGREE
Fashion	<ul style="list-style-type: none"> <li>• Fashion Design</li> <li>• Fashion Management</li> </ul>	<p><b>DUAL AWARD</b></p> <p>Bachelor of Arts (S.Sn.) from BINUS UNIVERSITY and Bachelor of Arts (BA Hons) from Northumbria University, Newcastle upon Tyne, United Kingdom</p>
Graphics Design & New Media	<ul style="list-style-type: none"> <li>• Graphics Design</li> <li>• Interactive Digital Media (IDM)</li> </ul>	



People  
Innovation  
Excellence



## TWO-DEGREE PROGRAM

# 4+0

#weareinternational  
#binusnewcastle

A Special Track\* for:  
**Business Management  
& Marketing  
International Business  
Finance**

**One** program of study delivered entirely in English at BINUS INTERNATIONAL campus

**Two** AACSB-accredited degrees from Indonesia and Australia

**Three** global alumni and professional networks to enhance your employability and connections

**Global exchange** and study options, including in Australia

**Affordable** vibrant student life in Jakarta – the Big Durian

**Access** to experts of the thriving digital economy in Asia, the member of G-20 holding the seat of ASEAN

MAJOR	STREAMING	DEGREE
International Business	Innovation & Entrepreneurship	DOUBLE DEGREE Bachelor of Economics (S.E.) from BINUS and Bachelor of Business (BBus) from University of Newcastle, Australia
Business Management & Marketing		
Finance	Finance	DOUBLE DEGREE Bachelor of Economics (S.E.) from BINUS and Bachelor of Commerce (BCom) from University of Newcastle, Australia

\*3+1 pathway is also available for the streamings above.



f Binus International @BinusINTL  
@BinusInternational @BinusInter

[international.binus.ac.id](http://international.binus.ac.id)

# DEGREE DESCRIPTION

## Bachelor of Computer Science (S.Kom.) Tracks: single degree, double degree

BINUS UNIVERSITY, born from a modern computer science course in the mid-1970s, is committed to the field of Computer Science in fostering & empowering the society. The program emphasizes the processes, techniques, and tools that go into developing computer-based systems, with specializations in several sectors such as intelligent systems, software engineering, multimedia technology, database systems and network technology. The program is not only concerned with the academic quality, but it also prepares students for their future careers by providing them with opportunities to obtain Certified Ethical Hacker (CEH) professional certifications and work experience through industry internships.

There are two distinctive programs that offer Bachelor of Computer Science (S.Kom.) degree:

### Business Information System

The ability to be the link between technology and the customers is a rare qualification in IT industry nowadays. Combining international quality curriculum with embedded entrepreneurship and innovation subjects, the program opens to its graduate endless opportunities from being a world-class information system professional to a well-equipped business start-up entrepreneur. The industrial internship program provides students with real experiences in the workplace and leverages their ability to cope with the international working environment. In addition, a series of trips support individual career aspirations and may provide social and professional networks.

### Computer Science

The program has a range of focused courses, called streams, at the undergraduate level, including pervasive software engineering, games design & programming, cloud and distributed systems, technopreneurship, intelligent systems, data science, ethical hacking, and more. The program provides the students with the technical, entrepreneurial, and specialized skills needed to develop and design applications across modern platforms, such as cloud, the web, and mobile, in a rapidly changing IT environment. Students experience a vast range of innovative learning processes, including blended learning, experiential, flipped classroom, hackerspace/makerspace and others.

### CAREER OUTLOOK

Web Developer, Software Engineer, Network Administrator, Computer Security Professional, Multimedia Systems Developer, Games Developer, Technical Artist, Database Developer, IT Sales Engineer, Business Application Developer, IT Project Planner, Program Analyst.





## DEGREE DESCRIPTION

### Bachelor of Economics (S.E.)

Tracks: double degree, master track

BINUS enjoys a strong reputation for its business programs resulting partly from its close ties with the industry and continuous international benchmarking efforts. As a result, BINUS BUSINESS SCHOOL (BBS) has been accredited with the highly coveted qualification bestowed on the top business schools around the world by AACSB (Association to Advance Collegiate Schools of Business) in 2019. BBS continues to work in partnership with business schools around the world to offer students the opportunity to enjoy the highest standards of teaching while experiencing the vibrancy of Indonesia's growing economy. Our partnership with the University of Newcastle, Australia, ranked top 200 in the world and top 10 in Australia for Business and Commerce courses, offers a Two-Degree program (4+0) for our business management courses and finance course. It provides an opportunity for students to gain both BINUS and University of Newcastle degrees at the same time, at a lower cost.

There are three distinctive programs that offer Bachelor of Economics (S.E.) degree.

#### **Bachelor of Economics programs under AACSB-Accredited BINUS BUSINESS SCHOOL:**

##### **Business Management & Marketing**

The program emphasizes mastery of key business management and marketing concepts, technology, and tools required by future professionals. The program equips students with basic scientific business management and marketing paradigms, theoretical frameworks, applied skills, and familiarity with contemporary technology to support their competence as future leaders in business. Lecturers maintain continuous cooperation with many first-class companies in Indonesia to ensure relevant guest lectures, internships, and consulting thesis projects.

##### **International Business**

International Business program (IB) is designed to encourage students to excel their competencies in business-related content in an international environment particularly in the region of ASEAN. Students will be given the opportunity to join the P2A (Passage to ASEAN) study tour to different ASEAN countries to learn about many things starting from culture, people, social life, economic practices, etc. Students are also exposed to global business applications and practices from around the world. The program is taught by well-qualified academics from some of the most prestigious business schools and with rich industry experience.

#### **Bachelor of Economics program under the Faculty of Economics and Communication:**

##### **Finance**

The program is the first in Indonesia to adopt the International Financial Reporting Standards in all Financial Accounting teaching materials and implement the student-centered learning approach to improve critical thinking as well as business communication skills. Built on internationally and professionally benchmarked process for program design and delivery, the program delivers graduates ready to compete on the international stage. Students have access to CIMA and CPA Australia accreditation.

### CAREER OUTLOOK

International Brand Manager, Assistant Export Manager or Import Management, Management Trainee in MNCs, Assistant International Marketing Development, Assistant HR in MNCs, Assistant Financial Manager in MNCs, Trade Development Officer, International Account Executive, etc.



## DEGREE DESCRIPTION

### Bachelor of Communication (S.Ikom.) Tracks: single degree, double degree

The Communication program at BINUS UNIVERSITY INTERNATIONAL provides extensive knowledge of digital and non-digital communication skills, practices, and technologies as an integral part of creating an efficient message to the target audience in an expanding new media, as well as social, cultural, and ethical knowledge to create responsible communication.

There are three distinctive streams that lead to the Bachelor of Communication (S.Ikom.) degree:

#### Journalism

The stream covers theories and practices in all aspects of journalism, including writing, interviewing, reporting, editing, broadcasting, basic photography, and videography. Students have an opportunity to interview personalities relevant to current affairs and the field of their passion. Classes such as Media Interview Technique and Broadcast allow exploration of the journalism field with hands-on assignments.

#### Public Relations

The stream covers theories and practices in all aspects of public relations, including writing for public relations, creating campaigns and projects, and conveying messages to the public. Students have an opportunity to explore press conferences and talk to brand managers in various industries. The Public Relations stream will enable students to explore public relations in creative, corporate, as well as governmental areas.

#### Entertainment Communications

The stream covers theories and practices in all aspects of entertainment communications such as planning and creating events, writing for the entertainment industry, and doing event promotions. Throughout the studies, the students are given an opportunity to explore the entertainment industry, with a special focus on social media and events. It is about finding or creating income opportunities within the creative industry from an artist's perspective as well as that of a manager.

### CAREER OUTLOOK

Corporate Communications Specialist, Digital Marketing Strategist, Journalist, Producer, Creative Director, Event Manager, etc.



## DEGREE DESCRIPTION

### Bachelor of Arts (S.Sn.)

#### Tracks: double degree

The program is tailored as a Dual Award (4+0) program, where all students learn combined units from BINUS and Northumbria University of UK. Upon graduation, students will receive both Bachelor of Arts (S.Sn.) from BINUS and Bachelor of Arts from Northumbria University, Newcastle upon Tyne, United Kingdom.

BINUS Northumbria School of Design (BNSD) is designed to prepare students for professional practice in both corporate and entrepreneurial setting. Supported by excellent well-maintained facilities and labs, our design students can develop their skills and competencies in a high standard learning environment. In helping to launch and expose our students' innovative work to the world, BNSD also takes part and creates yearly events for students to showcase their masterpieces. Selected student work may be showcased during the yearly Jakarta Fashion Week or other design-focused events.

There are two distinctive programs that lead to the Bachelor of Arts (S.Sn.) degree:

#### Fashion

Fashion is one of the most lucrative industries in the world involving millions of workers. One indispensable role is the creator. To capture buyers in a highly competitive market, fashion designers must challenge creativity in composing new and fresh approaches to energize their products. This undergraduate program is designed for creative thinkers interested in transforming their ideas and vision into fashion design products. Learning is supported with state-of-the-art laboratories such as textile experiment room and the garment production workshop. The Fashion Management students focus on the knowledge of fashion business strategy and promotion, with graduates able to develop both creative products and manage fashion businesses.

#### Graphics Design & New Media

Everything that needs to be visually communicated to audiences - such as products, services, company images, and campaign messages - needs a graphic design process to create the visual representation of ideas and relay them to audiences for the desired impact. As the advertising industry develops, the need for capable graphic designers is more than ever. Computer labs and the photographic studio are among the laboratories supporting student learning. Interactive Digital Media streaming focuses on producing meaningful experience for people in the new digital media such as web pages, smartphones, UI devices and screen-based interface designs.

#### CAREER OUTLOOK

Fashion Professional, Fashion Designer, Fashion Consultant, Entrepreneur, Graphic Designer (Graphic Design Houses, Creative Houses, Art Galleries), Brand Development Consultant, Corporate Communication Consultant, Entrepreneur, Freelancer, etc.



# TUITION FEES FOR INTERNATIONAL STUDENTS

PROGRAMS		TOTAL TUITION	ESTIMATED YEARLY PAYMENT			
			S1	S2	S3	S4
BINUS INTERNATIONAL	COMPUTER SCIENCE BUSINESS INFORMATION SYSTEMS COMMUNICATIONS BUSINESS MANAGEMENT & MARKETING INTERNATIONAL BUSINESS FINANCE INTERNATIONAL PROGRAM	USD 41,200	USD 11,500	USD 11,500	USD 11,200	USD 7,000
BINUS NORTHUMBRIA SCHOOL OF DESIGN	FASHION DESIGN/ MANAGEMENT GRAPHIC DESIGN/ NEW MEDIA	USD 48,000	USD 13,000	USD 13,000	USD 13,000	USD 9,000

## BINUS INTERNATIONAL - DOUBLE DEGREE (2+2 or 3+1)

Students taking the double degree track abroad need to pay **BINUS annual fixed fee of USD 1,750 while studying abroad + partner's tuition fees**. The costs at BINUS UNIVERSITY's double degree partners depend on the amount of credits taken. Please refer to the table below for the indicative annual tuition fees at BINUS UNIVERSITY's partner universities:

Major	Indicative Tuition at Partner University for Double Degree (per year)***										
Business Information Systems	Cologne International Business School (CBS), Germany EUR 10,980		Queensland University of Technology (QUT), Australia AUD 36,300		(MT) Macquarie University, Sydney, Australia AUD 38,000		(MT) Boston University MET International, USA USD 58,560		Northumbria University, UK, GBP 16,000		
Business Management & Marketing	Cologne International Business School (CBS), Germany EUR 10,980		Saxion University of Applied Science, Netherlands EUR 8,800		Queensland University of Technology (QUT), Australia AUD 31,100		Macquarie University, Australia. MT: AUD 38,000 DD: AUD 38,800		Bournemouth University, UK GBP 14,100	Solbridge International School of Business, South Korea USD 15,669	
Communications	Northumbria University, UK GBP 16,000										
Computer Science	University of Nottingham, UK GBP 25,000			RMIT University, Australia AUD 36,480			Wollongong University, Australia AUD 33,840		(MT) Boston University MET International, USA USD 58,560		
Finance	Cologne International Business School (CBS), Germany EUR 10,980			University of New South Wales, Australia AUD 44,880			Victoria University of Wellington, New Zealand NZD 29,442		(MT) Macquarie University, Australia. AUD 38,000		
International Business	Bournemouth University, UK GBP 14,100	Cologne International Business School (CBS), Germany EUR 10,980	Ningbo University, China CNY 18,000	University of New South Wales, Australia AUD 44,880	Victoria University of Wellington (VUW), New Zealand, NZD 29,442	Solbridge International School of Business, South Korea USD 15,669	Edinburgh Napier University, UK USD 13,770	(MT) Boston University MET International, USA USD 58,560			
Study Abroad/ Single degree	University of Queensland Australia, AUD 12,900		RMIT, Australia AUD 8,640		Macquarie University, Australia, AUD 9,800		Victoria University of Wellington, New Zealand NZD 13,150		Cologne International Business School (CBS), Germany EUR 6,930		University of York, UK GBP 9,175
	University of Suffolk, UK GBP 7,860		University of New South Wales, Australia AUD 12,800		Boston University MET International, USA USD 11,579		UCLA Extension, USA USD 10,100		Curtin University, Singapore AUD 9,300		Curtin University, Australia AUD 10,300
Double Degree Fee (per year)**	USD 1,750										

\* The indicated study fee is a guideline only as to what the actual tuition fee will be. This fee may be changed based on the tuition fee of the partner university in the current academic year.

\*\* The double degree fee has to be paid in advance before the study abroad program starts.

# ACCOMMODATION AND FEES

## BINUS Square - Hall of Residence (BSQ)



BINUS SQUARE (BSQ) is run by BINA NUSANTARA FOUNDATION since 2010 providing you with a home away from home comfort. The dormitory accommodates up to 2,500 students and visitors at a reasonable cost and in a comfortable, dynamic and safe environment.

The modern design of your room is the right style for energetic young people. All rooms are provided with:

- **Air conditioner**
- **Internet access (Wi-Fi and LAN)**
- **Electricity (with a quota of 180 kWh)**
- **Single-size beds and pillows**
- **Study desks/lamps, bookshelves, and wardrobe cabinets for each boarder.**
- **Smoke detector and sprinkler**
- **Shared bathroom and pantry (for Student Towers Area)**

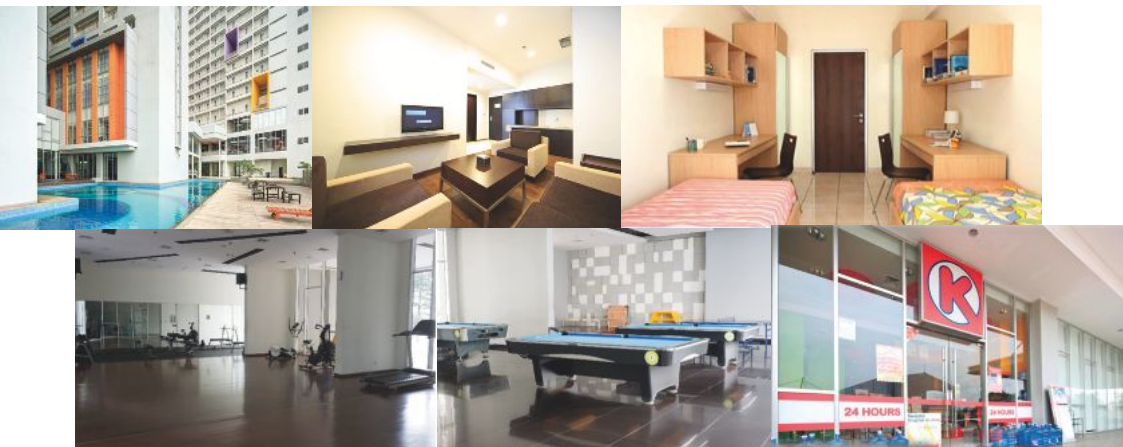
Students can rent this standard accommodation in the Student Towers area. A limited number of twin bedrooms with cable TV, bath amenities (en-suite bathroom), hot water, snack corner and cleaning services are also available to students in the Guest Room area. Guest Rooms can also be rented by visitors.

The following facilities are also available at BSQ:

- **Cafeteria with multiple vendors, coffee shop, and 24h mini-market**
- **Gym, jogging track, and swimming pool**
- **Laundry service**
- **Meeting rooms and games room**
- **24h service desk and security, CCTV security**
- **Electronic access control system**
- **Pantry areas and bathrooms at the end of each floor**
- **Copy center**
- **ATM center, etc.**

We also provide a shuttle system that links BSQ with BINUS INTERNATIONAL (30-45 minutes to reach BI campus).

Dedicated staff and students run activities under the following four program types: social experience, international experience, personal development, and academic development. Coaching for boarder activities and psychological counselling is also secured.





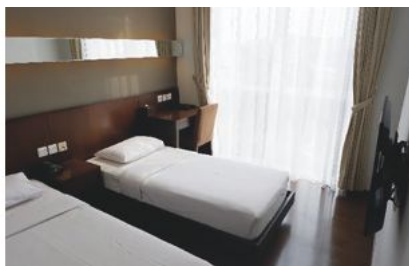
ACCOMMODATION FEES - in USD*		
ROOM TYPE		SEMESTER PRICE/person
Guest Room Area		
Premium Guest Room (17 m <sup>2</sup> )	Single Occupancy	2,500
	Double Occupancy (two boarders/room)	1,700
Student Towers Area		
Single Premium (12 m <sup>2</sup> )		1,700
Single Standard (7,5 m <sup>2</sup> )		1,400
Double Occupancy (two boarders/room) (12 m <sup>2</sup> )		1,150

\* Prices are valid for academic year 2022/2023

## OFF CAMPUS ACCOMODATION

Undergraduate first-year students are encouraged to stay at BINUS Square.

Apartments and student rooms known as 'kost' are off-campus accommodation types available in the residential areas around BINUS campuses. Students can rent apartments or single rooms in the dormitory pavilions and private homes. The prices vary ranging from 50 USD to 300 USD monthly. We can provide a list of recommended kost pavilions. We can also recommend websites advertising apartments for rent.



# LIVING COST ESTIMATION

## ESTIMATED ANNUAL LIVING COST (in USD)

ITEM	UNIT PRICE	PAYMENT SCHEDULE	ANNUAL COST
Books	150	Per semester	300
Food <sup>1</sup>	150	Monthly	1,800
Leisure <sup>1</sup>	100	Monthly	1,200
Health Insurance <sup>2</sup>	200	Annual	230
Telex Visa	15	Once	15
VITAS <sup>3</sup>	150	Once	150
ITAS + MERP <sup>4</sup>	250	As required <sup>5</sup>	250
<b>Total</b>			<b>3,945</b>

### Notes

All students are expected to have their own computer.

<sup>1</sup> The food and leisure cost above is the minimum prediction and depends on your lifestyle.

<sup>2</sup> All students are required to have a health insurance unless they can show proof of insurance plan valid in Indonesia.

The health insurance only covers basic healthcare. Students must prepare extra emergency funds for special health conditions that are not covered by the provider. For further information, please contact felicia.margaretha@binus.edu.

<sup>3</sup> Students switching sponsor or entering Indonesia on short term visa need to apply for VITAS in a nearby country (process that takes 1 week with related flight and hotel costs); two exits out of the country may be required.

<sup>4</sup> Indonesian Temporary Stay Permit (ITAS) process requires Telex, VITAS, MERP (Multiple Re-Entry Permit) as well as the ITAS itself.

<sup>5</sup> The fee stated is for 2-year ITAS validity period. Shorter ITAS validity durations have different fees applied.

### OTHER COSTS

ITEM	PAYMENT SCHEDULE
Home Country-Jakarta Flight Ticket	as arranged
Double degree airfare and living cost difference	as arranged
BIPA (Bahasa Indonesia Course)	as arranged
Mandatory field trips and/or study overseas	based on program requirements
Art supplies	based on program requirements
Remedial and/or Retake fees	as arranged
Graduation fees	as arranged



# ADMISSION PROCESS AND REQUIREMENTS

## Admission Cycle for Undergraduate Programs

Senayan Campus (BINUS INTERNATIONAL and BNSD)			
February Intake		September Intake	
Admission	Scholarship	Admission	Scholarship
1 December	15 November	1 July	1 May

## General Requirements for Undergraduate Programs

Requirements for each major are in the table below:

Faculty/ School	Major	High School Requirement	English Requirement	Entrance Test Material
BINUS INTERNATIONAL	Computer Science	High School – Grade 12 (A-Level/IB Diploma/ Equivalent)	TOEFL PBT: 550 TOEFL iBT: 80 IELTS: 6.0  Or Equivalent	<ul style="list-style-type: none"> <li>• Logic, Abstraction &amp; Verbal Test,</li> <li>• BINUS INTERNATIONAL English Proficiency Test</li> <li>• Drawing Test (for BNSD),</li> <li>• Interview with Head of Program (If Required)</li> </ul>
	Communication			
	Business Mgmt. & Marketing			
	Business Information Systems			
	International Business			
	Finance			
BINUS NORTHUMBRIA SCHOOL OF DESIGN	Graphic Design & New Media			
	Fashion			

### Notes:

1. Applicants with Social Major in high school who wish to apply to the Computer Science program will be required to join the Matriculation course prior to the beginning of the 1st semester.
2. Applicants who have taken an IELTS or TOEFL exam are not required to take the BINUS International English Proficiency Test.
3. Grade 11 students may apply if they are able to obtain the High School Equivalency Letter from the Indonesian Ministry of Education. The Letter of Equivalency is needed for local or international students who have graduated from an international/intercultural school (international high school diplomas) and would like to do a bachelor's degree in Indonesia.

# ADMISSION PROCESS AND REQUIREMENTS

## Admission Process for Undergraduate Programs



### Required Documents

1. Admission Form
2. Transcripts of grades 10 - 12
3. High school diploma/Senior high national exam certificate
4. English Test Score Results
5. Colour copy of passport personal page (valid for the full duration of the study)
6. ID photograph 4x6 cm (300 kb; electronic version)

If you are interested to apply for our BINUS World-Class Scholarship, please note that there will be additional requirements. Please refer to page 15: **Scholarships**.

### Notes:

\*The interview with the Head of Program is only required for applicants applying for a scholarship from BINUS UNIVERSITY.



# BINUS WORLD CLASS SCHOLARSHIP

BINUS World Class Scholarship rewards international students at undergraduate level demonstrating academic excellence and leadership skills. The scholarship applies to international undergraduate programs at BINUS INTERNATIONAL and BINUS Northumbria School of Design.

## SCHOLARSHIP ELIGIBILITY

- High school graduate - Grade 12 with GPA 3.0 out of 4.0 (75%)
- A-level certificate (BBB)/IB Diploma (32 points)
- IELTS 6.0 (on all components), or equivalent

## SCHOLARSHIP APPLICATION DOCUMENTS

Complete admission application documents PLUS:

1. Curriculum Vitae (CV)
2. Motivation letter
3. Proof of financial competency beyond scholarship (official letter from bank confirming a minimum balance of USD 4,500 in applicant's account)
4. 2 recommendation letters
5. Proof of achievements
6. Portfolio (for Graphic Design and Fashion Management program applicants)

## THE SCHOLARSHIP COVERS

1. 100% tuition waiver for 4 years (including 4+0 program)
2. Free standard double room at BINUS Square (BSQ) - Hall of Residence
3. Free shuttle bus service
4. Health benefit
5. Visa and stay permit refund benefit (VITAS/KITAS only)

## THE SCHOLARSHIP DOES NOT COVER

1. Extra semester credit units
2. Remedial and retake fees
3. Double degree tuition/accommodation fees
4. Study abroad/ student exchange fees
5. Mandatory field trips
6. Language courses
7. Living cost (food & leisure)
8. Books and supplies
9. Flights
10. Refundable BSQ security deposit

**Scholarship renewal requirements:**

GPS (Grade Point Average for a Semester) 2.75 out of 4.0 and fulfilled ambassadorship requirements



# VISA PROCESS AND REQUIREMENTS

## STUDY PERMIT REQUIREMENTS

1. Color copies of your passport ID page,
  2. Academic transcript,
  3. Financial statement\*,
  4. Non-political & non-working statement\*,
  5. Color photograph\*,
  6. Health statement\*,
  7. Visa option agreement,
  8. Statement of Domicile (Indonesian address) \*
- \*Detailed Information form.

## TELEX VISA REQUIREMENTS

1. Scanned copy of your passport cover
2. During pandemic (until further notice), there are additional documents that must be provided for Telex Visa Processing. The documents are as follows:
  - PCR Test with negative result
  - Covid-19 Vaccination Certificate
  - Three statement letters consenting to:
    1. do Covid-19 related quarantine, either mandatory or voluntary, with regards to health test result upon arrival in Indonesia,
    2. be monitored by the relevant authorities in Indonesia during quarantine
    3. valid health insurance, or a statement letter stating consenting to cover Covid-19 quarantine and treatment costs in Indonesia.

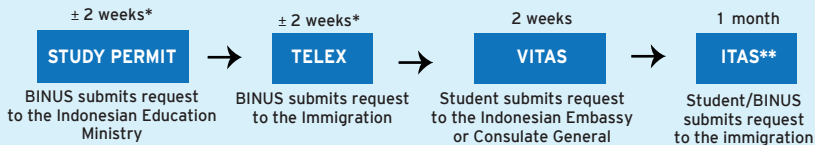
## VITAS (LIMITED STAY VISA) REQUIREMENTS

1. Telex Visa\*
  2. Study Permit\*
  3. Letter of Acceptance\*
  4. Copy of your passport - ID pages
  5. Passport
- \*Document will be provided by BINUS UNIVERSITY.

## ITAS (TEMPORARY STAY PERMIT) REQUIREMENTS

1. Arrival stamp
2. VITAS sticker
3. TELEX Visa
4. Sponsor and guarantee letter from BINUS UNIVERSITY
5. Copies of your passport ID page
6. Study Permit
7. Passport

## VISA TIMELINE



\*longer process for calling visa and delicate countries  
\*\*after arrival

The whole visa process can take up to 1-3 months in total, if students have submitted the complete documents.

## IMPORTANT NOTES:

- Indonesian law does not allow employment of foreigners under student visa.
- Students must present themselves to the locally governed immigration office to process biometric record and obtain their KITAS.
- Currently there are no new issuance of visa applications for study purposes
- Foreigners need to have vaccination certificate prior to entering Indonesia when the borders are opened
- Should there be any mandatory quarantine from the government, applicants needs to cover the quarantine fees on their own.






People  
Innovation  
Excellence



## CONTACT:

BINUS Global  
BINUS UNIVERSITY  
Jl. Kebon Jeruk Raya No. 27  
Kebon Jeruk, Jakarta Barat 11530  
Indonesia  
Phone : +62 (0)21 534 5830 Ext. 1325  
Email: [global@binus.edu](mailto:global@binus.edu)  
Website: [global.binus.ac.id](http://global.binus.ac.id)

Follow us:

 @BinusGlobal  BINUSUniversity  Binus International