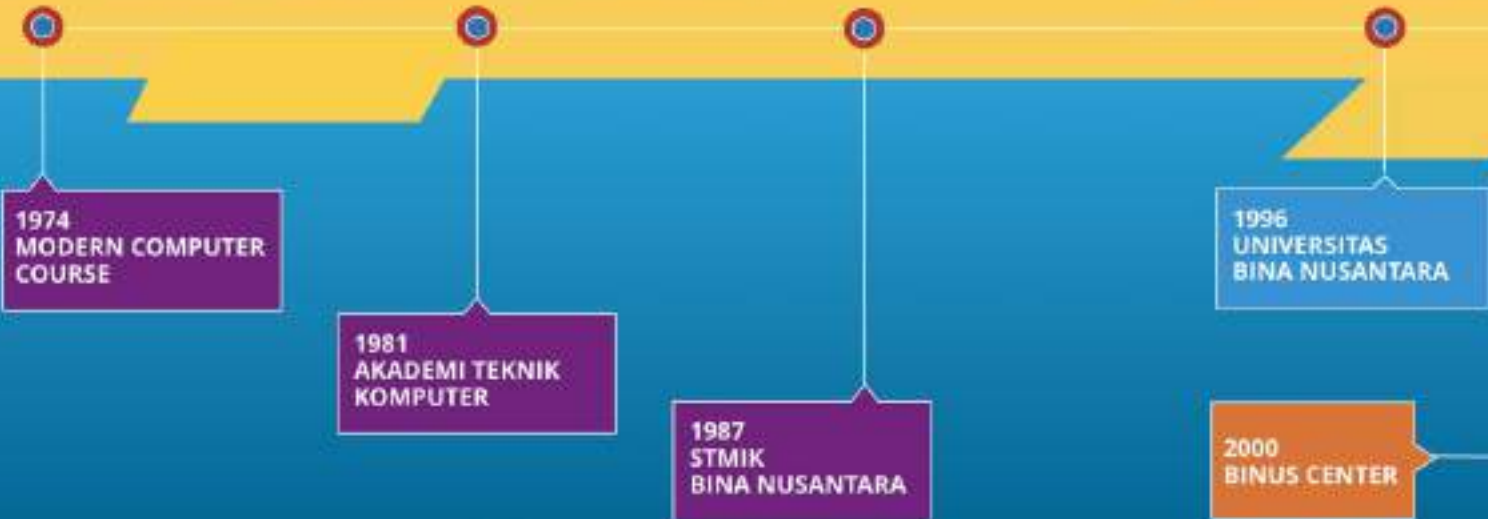




**BINUS UNIVERSITY'S
Short Profile**



BINUS UNIVERSITY's Journey



BINUS UNIVERSITY's Journey



BINUS UNIVERSITY's Journey



1974

Modern Computer Course
Tempat kursus pertama
di garasi rumah

BINUS UNIVERSITY

YAYASAN PEMBINA

Yayasan Bina Nusantara

BINUS UNIVERSITY's 2035 Vision

A World-class university,
fostering and empowering the
society in building and serving
the nation

MISSION

The mission of BINUS University is to build the nation and to contribute in global community development by providing world class education by means of :

- Educating BINUSIAN to develop exemplary characters through holistic approach that meets global standards.
- Resolving the nation's issues through high impact research.
- Fostering BINUSIAN as lifelong learners through self-enrichment.
- Empowering BINUSIAN to continuously improve society's quality of life.
- Being the main driver to enrich the BINUS Higher Education system.

VALUES

Based on our belief in God, our passion for education, and our view of a bright future, we are committed to developing the nation and to building a global community through education and technology.

This commitment is reflected in the values of Bina Nusantara, which become the guidance of our actions:
Striving for excellence. Perseverance. Integrity. Respect. Innovation. Teamwork.

BINUSIAN

12.487

NEW STUDENTS

42.375

ACTIVE STUDENTS

1.607

ACTIVE LECTURERS

1.412

FACULTY MEMBER

195

ASSOCIATE FACULTY MEMBER

S1: 91

S2: 1.202

S3: 314

122.592

ALUMNI

ASEAN GROWTH



POPULATION

655 Million

8.6% of the world's total population



COUNTRIES

MEMBER COUNTRIES

Brunei
Myanmar
Cambodia
Philippines
Indonesia

Singapore
Laos
Thailand
Malaysia
Vietnam

ECONOMY

If ASEAN were a single country, it would be the

7th LARGEST economy in the world.

A combined GDP of

\$3.11tri (2020)

and projected to double by

\$6.7tri (2030)

Ranked as

4th LARGEST Economy by 2030



EDUCATION



7,000 higher education institutions

12 million student enrollment in higher education (2017)

ASEAN Higher Education Area

JAKARTA

JAKARTA

Capital city of **Indonesia**

JAKARTA

2nd largest megacity in the world

POPULATION

more than **10.9 million**

A MULTICULTURAL CITY

made up by millions of migrants and visitors; parallels the modernity of a metropolis

Famous for **the traffic, the people, the food, the entertainment, and the shopping malls**



The city is the seat of the **ASEAN Secretariat**

JAKARTA



INDONESIA



BINUS CAMPUSES



BINUS @ Kemanggisan – West Jakarta

BINUS Bekasi



BINUS Syahdan



BINUS Kijang



BINUS Angrek



BINUS Square



BINUS @ Alam Sutera – Tangerang

BINUS @ Senayan – South Jakarta

BINUS Bandung



BINUS Alam
Sutera



BINUS ASO



BINUS JWC Senayan



BINUS f(X) Sudirman



BINUS @Malang

BINUS UNIVERSITY Learning Community



BINUS UNIVERSITY's Awards & Achievements



**BINUS UNIVERSITY
AWARDED 5 STARS OVERALL**

**WORLD UNIVERSITY
RANKINGS**

801-1000

**TOP 7
INDONESIAN
UNIVERSITIES**



QS WORLD
UNIVERSITY
RANKINGS

Ranked

2021

**ASIA UNIVERSITY
RANKINGS**

227

**TOP 7
INDONESIAN
UNIVERSITIES**



**NATIONAL AGENCY
FOR HIGHER EDUCATION
ACCREDITATION (BAN PT)**

TOP 500

2021

Computer Science Information Systems



BY SUBJECT

NATIONAL ACCREDITATION



*one of A accredited HEI out of 4,718**



(by Private High Education – Region III)

7 CATEGORIES

Collaboration	Development	Governance	Student Development	Lecturer Development	Research and Utilization	Field of Engineering	Field of Computing
---------------	-------------	------------	---------------------	----------------------	--------------------------	----------------------	--------------------

*<https://forlap.ristekdikti.go.id/perguruan tinggi/homegraphpt>

International Accreditation



INTERNATIONAL RECOGNITION

BINUS UNIVERSITY
The Top 1000 Universities in the World 2020

BINUS UNIVERSITY
AWARDED 5 STARS OVERALL



QS STARS™
RATING SYSTEM

★ ★ ★ ★ ★

RANKED ASIA



QS WORLD UNIVERSITY RANKINGS
2021

#227 in Asia



TOP 1
PRIVATE UNIVERSITY

QS WORLD UNIVERSITY RANKINGS

TOP 500 2021
Computer Science Information Systems



QS WORLD UNIVERSITY RANKINGS
BY SUBJECT

RANKED IN THE WORLD'S TOP 500 UNIVERSITIES FOR 2020



QS GRADUATE EMPLOYABILITY RANKINGS

INTERNATIONAL RECOGNITION

TOP 10 UNIVERSITIES IN INDONESIA WEBOMETRICS RANKING OF WORLD UNIVERSITIES 2021

World Rank	University
810	University Gadjah Mada
1088	Institut Pertanian Bogor
1089	Institut Teknologi Sepuluh Nopember
1315	Universitas Indonesia
1322	Universitas Airlangga
1647	Institut Teknologi Bandung
1902	BINUS UNIVERSITY
1990	Universitas Sebelas Maret UNS Surakarta
1994	Universitas Diponegoro
2053	Universitas Jember

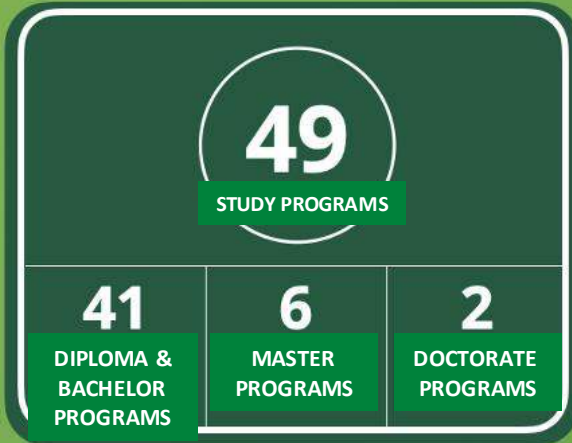
www.binus.edu



ACCREDITATION AND MEMBERSHIPS



STUDY PROGRAMS



BAN-PT ACCREDITATIONS



SCOPUS PUBLICATIONS



BINUS UNIVERSITY CAMPUSES



1984
BINUS @Kemanggisan
Kampus Syahdan



1996
BINUS @Kemanggisan
Kampus Anggrek



1998
BINUS @Kemanggisan
Kampus Kijang



2010
BINUS Square



2001
BINUS @Senayan
JWC Campus



2011
BINUS BASE



2012
BINUS @Senayan
Kampus fx



2014
BINUS @Alam Sutera



2017
BINUS @Bandung



2018
BINUS @Bekasi



2019
BINUS @Malang

FACILITIES



11
CAMPUSES

327
CLASSROOMS

2,500
BINUS SQUARE
HALL OF
RESIDENCE
CAPACITY

33,500
LIBRARY TITLES

183
LABS

22
LARGE HALLS

ALAM SUTERA CAMPUS



AUDITORIUM

BINUS UNIVERSITY

ALAM SUTERA CAMPUS

Multi-function Hall

BINUS Alam Sutera Campus



BEKASI CAMPUS



BINUS @Bekasi Campus

BINUS @Bandung Campus



MALANG CAMPUS



BINUS Malang Campus



BINUS SQUARE



**WELCOME TO
BINUS SQUARE - Hall of Residence**

"A Vibrant and Exciting University Boarding Life"

BINUS SQUARE'S FACILITIES

DOUBLE OCCUPANCY



POOL



GAME CENTER



FOOD COURT



CLASS



GYM

QUICK FACTS

STATISTICS 2020

953
OUTBOUND
STUDENTS
2019

37
INTL. LECTURERS

12,487
NEW STUDENTS

42,375
ACTIVE STUDENTS

2,550+
COLLABORATION
ACTIVITIES W/
INDUSTRY

636
VISITING
INTL. STUDENTS
2019

95%
INTL. EXPERIENCE
AT GRADUATION

1,607
ACTIVE FACULTY

122,592
ALUMNI

1,590+
INTL. COLLABORA
TION ACTIVITIES

BINUS UNIVERSITY PARTNERS

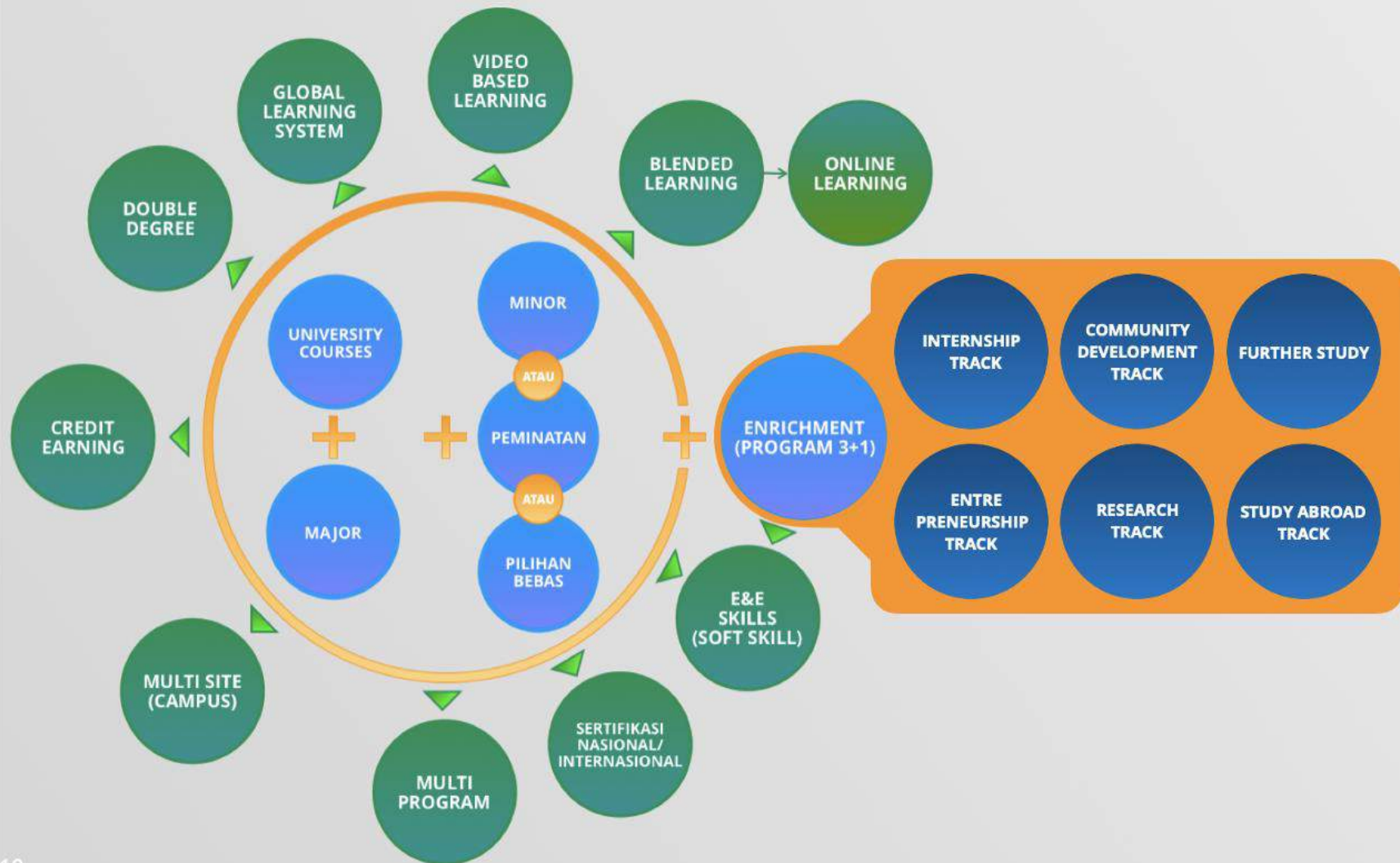
5
CONTINENTS

41
COUNTRIES

240+
UNIVERSITIES



(2+1)+1 ACADEMIC SYSTEM



2+1+1 PROGRAM DISTRIBUTION ILLUSTRATION

BINUS GRADUATE ATRIBUTES

20+20
40 SKS

INTERNSHIP
2 SEMESTER

ENTREPRENEURSHIP
2 SEMESTER

RESEARCH
2 SEMESTER

COMMUNITY DEVELOPMENT
2 SEMESTER

STUDY ABROAD
2 SEMESTER

FURTHER STUDY
1 SEMESTER

1 YEAR OFF CAMPUS
(ENRICHMENT)

FOCUS ON GLOBAL E & E SKILLS, CHARACTER & VALUES

STRUCTURED ACADEMIC PROGRAMME
(GLOBAL LEARNING SYSTEM)
3 YEARS

3 YEARS ON CAMPUS

SEMESTER

1

2

3

4

5

6

7

8

VIDEO BASED LEARNING

SERTIFIKASI

MINOR & STREAMING

CREDIT EARNING

@HEMPCAMPUS

@MULTICAMPUS

@BANDUNG

@MALANG

@JAKARTA

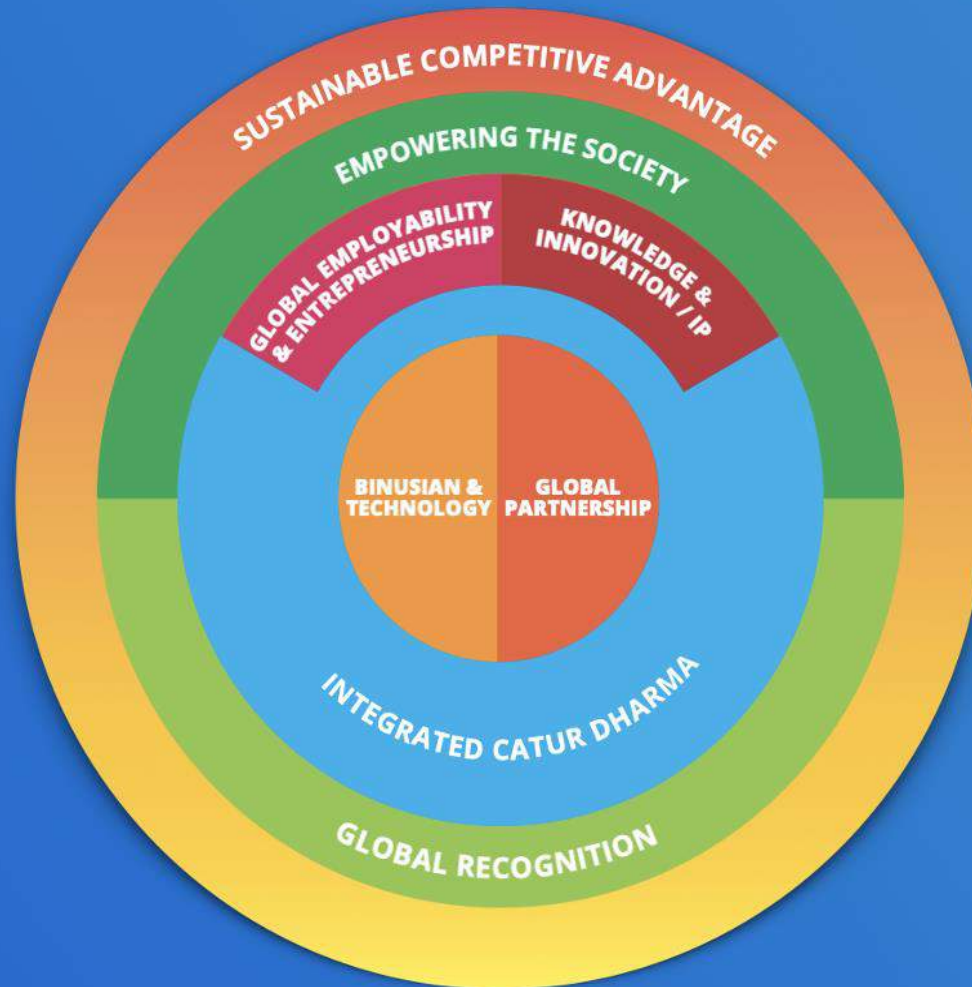
@HEMPCAMPUS

ALUMNI RELATION AND DEVELOPMENT

PROFESSIONAL
ENTREPRENEUR
FUTURE STUDY
OTHERS



STRATEGIC OBJECTIVES



BINUS

GRADUATE ATTRIBUTES



**2 IN 3 GRADUATES
WORK IN THE GLOBAL COMPANIES
OR BECOME ENTREPRENEURS
WHO FOSTER AND EMPOWER THE SOCIETY**



Program & Program Studies

SCHOOL OF COMPUTER SCIENCE

- Computer Science
- Mobile Application & Technology
- Game Application & Technology
- Cyber Security
- Data Science
- Computer Science (Bandung Campus)
- Computer Science (Malang Campus)

SCHOOL OF INFORMATION SYSTEMS

- Information Systems
- Accounting Information Systems
- Information Systems Audit
- Business Information Technology
- Business Analytics

FACULTY OF ECONOMICS & COMMUNICATION

- Accounting
- Finance
- International Accounting & Finance
- Marketing Communication
- Mass Communication
- Tourism Destination
- Hotel Management
- Business Hotel Management
- Communication Science (Malang Campus)
- Public Relations (Malang Campus)

FACULTY OF HUMANITIES

- English Literature
- Japanese Literature
- Chinese Literature
- Psychology
- Business Law
- International Relations
- Primary School Teacher Education

FACULTY OF ENGINEERING

- Industrial Engineering
- Civil Engineering
- Architecture
- Computer Engineering
- Food Technology
- Professional Engineer

SCHOOL OF DESIGN

- Visual Communication Design in New Media
- Visual Communication Design in Creative Advertising
- Visual Communication Design in Animation
- Interior Design
- Film
- Visual Communication Design (Bandung Campus)
- Interior Design (Bandung Campus)
- Visual Communication Design (Malang Campus)
- Interior Design (Malang Campus)

MASTER TRACK PROGRAMS

Computer Science
 Information Systems Management
 Management

DOUBLE DEGREE PROGRAM

Computer Science & Mathematics
 Computer Science & Statistics
 Information Systems & Management
 Information Systems & Accounting

BINUS ONLINE LEARNING (PJJ)

Information Systems
 Accounting
 Management
 Computer Science
 Industrial Engineering

FACULTY OF COMPUTING & MEDIA

Computer Science
 Business Information Systems
 Communication

BINUS NORTHUMBRIA SCHOOL OF DESIGN

Fashion Design
 Fashion Management
 Graphic Design & New Media

BINUS ASO SCHOOL OF ENGINEERING

Product Design Engineering
 Automotive & Robotic Engineering

BINUS BUSINESS SCHOOL (BBS)

BBS DOCTORAL PROGRAM

Doctor of Research in Management

BBS MASTER PROGRAM

Master in Business Management
 Master in Creative Marketing
 Master in Executive Management
 Master in Management (Blended Program)

BBS UNDERGRADUATE PROGRAM

Management
 International Marketing
 International Business Management
 Business Creation
 Business Management
 Entrepreneurship (Bandung Campus)
 Entrepreneurship (Malang Campus)

BBS INTERNATIONAL UNDERGRADUATE PROGRAM

International Business
 Business Management & Marketing

BINUS GRADUATE PROGRAM

Doctor of Computer Science
 Master in Computer Science
 Master in Information Systems Management
 Master in Industrial Engineering
 Master in Accounting
 Master in Communication

INTERNATIONAL UNDERGRADUATE PROGRAMS

BINUS UNIVERSITY Global Class

- Computer Science
- International Business Management
- International Relations

BINUS NORTHUMBRIA SCHOOL OF DESIGN

- Fashion Design
- Fashion Management
- Graphic Design
- Interactive Digital Media Design

BINUS INTERNATIONAL

- Business Information Systems
- Communication
- Computer Science
- Finance International Program
- Business Marketing & Management
- International Business

BINUS ASO SCHOOL OF ENGINEERING

- Automotive & Robotics Engineering
- Product Design Engineering



REGULAR UNDERGRADUATE PROGRAMS

KEMANGGISAN		ALAM SUTERA	BINUS BEKASI	BINUS ONLINE
<p>FACULTY OF ECONOMICS AND COMMUNICATION</p> <ul style="list-style-type: none"> - Accounting - Hotel Management - Marketing Communication - Mass Communication <p>BUSINESS SCHOOL UNDERGRADUATE</p> <ul style="list-style-type: none"> - Business Creation - Management - International Marketing - International Business Management <p>SCHOOL OF COMPUTER SCIENCE</p> <ul style="list-style-type: none"> - Computer Science - Cyber Security - Data Science - Game Application & Tech - Mobile Application & Tech - Computer Science & Mathematics - Computer Science & Statistics <p>SCHOOL OF INFORMATION SYSTEMS</p> <ul style="list-style-type: none"> - Accounting Information Systems - Computerized Accounting - Information Systems - Information Systems Audit - Information Systems & Accounting 	<p>SCHOOL OF DESIGN</p> <ul style="list-style-type: none"> - DKV Animation - DKV Creative Advertising - DKV New Media - Interior Design - Film <p>FACULTY OF ENGINEERING</p> <ul style="list-style-type: none"> - Architecture - Civil Engineering - Computer Engineering - Industrial Engineering - Food Technology <p>FACULTY OF HUMANITIES</p> <ul style="list-style-type: none"> - Business Law - Chinese - English - Japanese - International Relations - Primary Teacher Education - Psychology 	<p>FACULTY OF ECONOMICS AND COMMUNICATION</p> <ul style="list-style-type: none"> - Finance - Marketing Communication - Mass Communication <p>BUSINESS SCHOOL UNDERGRADUATE</p> <ul style="list-style-type: none"> - International Business Management. - International Marketing - Management <p>SCHOOL OF COMPUTER SCIENCE</p> <ul style="list-style-type: none"> - Information Technology <p>SCHOOL FOR INFORMATION SYSTEMS</p> <ul style="list-style-type: none"> - Information System <p>SCHOOL OF DESIGN</p> <ul style="list-style-type: none"> - DKV Animation - DKV New Media <p>FACULTY OF ENGINEERING</p> <ul style="list-style-type: none"> - Food Technology 	<p>BACHELOR PROGRAMS</p> <ul style="list-style-type: none"> - Accounting - Business Information Technology - Business Management <p>DIPLOMA IV</p> <ul style="list-style-type: none"> - Business Hotel Management (D4) 	<p>BACHELORS</p> <ul style="list-style-type: none"> - Accounting - Business Management - Information Systems – Corporate Information Systems - Computer Science <p>DIPLOMAS</p> <ul style="list-style-type: none"> - Computerized Accounting <p>BACHELORS (DIPLOMA EXTENSION PROGRAMS)</p> <ul style="list-style-type: none"> - Accounting - Business Management - Information Systems

41
BACHELORS &
DIPLOMAS

REGULAR UNDERGRADUATE PROGRAMS



6

BACHELOR
PROGRAMS



3

BACHELOR
PROGRAMS

BINUS MALANG

Programs

- Business Creation
- Computer Science
- Interior Design
- Communication
- Public Relation
- Visual Communication Design (DKV)

BINUS BANDUNG

Programs

- Computer Science
- Visual Communication Design
- Interior Design

GRADUATE & POSTGRADUATE PROGRAMS

8

MASTER PROGRAMS IN INDONESIAN

BINUS GRADUATE PROGRAMS

Master in Accounting Program

Master in Information Systems Management

Master in Information Technology

Master in Industrial Engineering

Master in Strategic Marketing Communication

BINUS BUSINESS SCHOOL

MM in Creative Marketing

MM Young Professional in Business Management

MM in Business Management – Blended Learning

2

DOCTORATE PROGRAMS

BINUS DOCTORATE PROGRAM

Doctor of Computer Science

Doctor of Research in Management

2

MASTER PROGRAMS IN ENGLISH

BINUS BUSINESS SCHOOL

MM Professional in Business Management

MM Executive in Strategic Management

DOUBLE DEGREES & MASTER TRACKS

Double Degrees

Country	Partner	Degree	Country	Partner	Degree	
Australia	Macquarie University*	Bachelor of Commerce	Korea	SolBridge International School of Business*	Bachelor of Business Administration	
	Queensland University of Technology*	Bachelor of Information Technology Bachelor of Business		Netherlands	Saxion University of Applied Science*	Bachelor of Business Administration
	RMIT University*	Bachelor of Information Technology			New Zealand	Victoria University of Wellington*
	University of New South Wales*	Bachelor of Commerce	United Kingdom	Bournemouth University*	BA (Hons) Business and Management BA (Hons) International Hospitality and Tourism Management	
	University of Canberra**	Bachelor of Commerce		Edinburgh Napier University*	BA (Hons) Business Management with Entrepreneurship	
	University of Newcastle*	Bachelor of Commerce Bachelor of Business		Northumbria University*	BSc (Hons) Information Technology Management for Business Bachelor of Arts (Hons)	
	University of Wollongong*	Bachelor of Computer Science		Nottingham University (UK, China, Malaysia)***	Bachelor of Science (Hons)	
China	Ningbo University*	Bachelor of Business Administration				
Germany	Cologne Business School*	Bachelor of Arts				

Joint Degree/Master Track run in cooperation with:

* BINUS International
 ** BINUS University
 *** BINUS University & BINUS University International

DOUBLE DEGREES & MASTER TRACKS

MASTER PROGRAMS

Country	Partner	Degree
Australia	Macquarie University*	Master of Commerce
France	ESC Dijon/Burgundy School of Business*	Master in Management
Korea	SolBridge International School of Business*	Master of Business Administration (MBA)

MASTER TRACK OPTIONS

Country	Partner	Degree
Australia	Macquarie University*	Master of Commerce Master of Management Master of Information Technology in Cyber Security Master of Information Systems Management
U.S.A	Boston University*	Master of Science

Joint Degree/Master Tracks run in cooperation with:

* BINUS International
 ** BINUS UNIVERSITY
 *** BINUS UNIVERSITY & BINUS International

RESEARCH INTEREST GROUP (RIG)

RIG PHOTONICS AND COMPUTER SIMULATION	RIG PERFORMANCE EXCELLENCE	RIG INTELLIGENT AND ADVANCE SYSTEM
RESEARCH FIELD <ul style="list-style-type: none"> • Photonics; • Lase Induced Breakdown Spectroscopy; • Control System; • Laser Applications. 	RESEARCH FIELD <ul style="list-style-type: none"> ▪ Business Process Management with BPI and BPR of Business, Government and Public Service for Performance Excellence; ▪ Integrated Model of Food Security System; ▪ Guidance on Integrated Coastal management and Capacity Building on Climate Change Adaptation in urban and Tourism Area; ▪ New Design of Transportation facilities and procedures based on Human Factor and Ergonomic Principles. 	RESEARCH FIELD <ul style="list-style-type: none"> ▪ Computational Intelligence; ▪ Knowledge Engineering; ▪ Advance System.
CONTACT Dr. Hedwig rinda@binus.edu	CONTACT Bachtiar H. Simamora M.Sc. Ph.D bsimamora@binus.edu	CONTACT Dr. Ford Lumban Gaol fgaol@binus.edu
WEBSITE https://research.binus.ac.id/rigpcs/	WEBSITE https://research.binus.ac.id/pex/	WEBSITE https://research.binus.ac.id/intelligent-and-advance-system/

RESEARCH INTEREST GROUP



RESEARCH INTEREST GROUP (RIG)

RIG FOOD BIOTECHNOLOGY

RESEARCH FIELD

Plant biotechnology for the development of healthy functional foods and medicines.

CONTACT

Dr. Nesti F. Sianipar, S.P. M.Si
nsianipar@binus.edu

WEBSITE

<https://research.binus.ac.id/food-biotech/>"<https://research.binus.ac.id/>

RIG EDUCATION TECHNOLOGY

RESEARCH FIELD

Facilitating learning and improving education performance by creating, using, and managing appropriate technological processes and resources to deliver continuous education.

CONTACT

Prof. Dr. Sasmoko. M. Pd.
sasmoko@binus.edu

WEBSITE

<https://research.binus.ac.id/edutech/>

RIG BEE - EMBEDDED

RESEARCH FIELD

- Development of food security (IoT-based smart farming);
- Information and communications Technology (ICT);
- Embedded system for automation and control system.

CONTACT

Dr. Suryadiputera Liawatimena
suryadi@binus.edu

WEBSITE

<https://research.binus.ac.id/site-group/bee-embedded/>

RESEARCH INTEREST GROUP

RESEARCH INTEREST GROUP (RIG)	
RIG BUSINESS RISK MANAGEMENT	RIG CROSS CULTURAL COMMUNICATION
RESEARCH FIELD Sustainability lens with a long-term goal to produce an export system addressing business risks.	RESEARCH FIELD <ul style="list-style-type: none">• Experimental research and participant observation in branding, digital media, family and cultural communication, and information technology as medium of communication• Research using interpretative survey method and big data technology
CONTACT Dr. Dewi Fitriasari, CSRA, CMA. dfitriasari@binus.edu	CONTACT Dr. Ulani Yunus uyunus@binus.edu
WEBSITE https://research.binus.ac.id/riskmanagement/	WEBSITE https://research.binus.ac.id/crosscomm/

RESEARCH CENTER (RC)

RIG

BIOINFORMATIC & DATA SCIENCE

RESEARCH FILED

- Web-apps Database
 - Programming Algorithms
 - Statistic Mathematics
 - Medicine Biology
-

CONTACT

Dr. Bens Pardamean

bpardamean@binus.edu

WEBSITE

<https://research.binus.ac.id/airdc/>

RESEARCH & PUBLICATIONS



4,829
ARTICLES
IN SCOPUS

INDEXED
JOURNALS

8
ACCREDITED
JOURNALS

1
RESEARCH
CENTER
+
8
RESEARCH
INTEREST GROUPS



IDR 78.41
BILLION
In RESEARCH GRANT
(2015-2021)

SHORT SUMMER PROGRAMS

Architecture Short Course

- The Polytechnic University Milan
- Deakin University
- International Islamic University Malaysia

Games Application and Technology Short Course

- Coventry University
- Deakin University

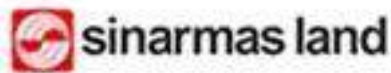
International Marketing Short Course

- King's College London



Deakin University
Games Application & Technology
Short Course

INTERNSHIP PROGRAMS



ACCOR
HOTELS



INDONESIA
AGENCY OF THE YEAR

SPECIAL PROGRAMS FOR INTERNATIONAL STUDENTS

SHORT COMMUNITY DEVELOPMENT PROJECT

- Donator
- Education Volunteer
- Social Volunteer for natural disaster and community service
- Creative Thinker

Handicraft Event at Rusunawa Flamboyan, Cengkareng, Jakarta



SHORT COURSES & PROGRAMS



BINUS UNIVERSITY

STRATEGY = ←

AN ONLINE SHORT COURSE (2 CREDITS)
MARKET ENTRY STRATEGY TO INDONESIA
26 JULY - 7 AUGUST 2021

Further info:
io.binus.ac.id
io@binus.edu
binus_internationaloffice

Registration:

bit.ly/BINUS-MES2021Reg



BINUS UNIVERSITY

AN ONLINE SHORT PROGRAM
**IMAGINE INDONESIA:
PUNTANG COFFEE STORY**
23 - 27 AUGUST 2021

 Scan me!

Registration:
bit.ly/BINUScoffeestory2021Reg

Further info:
io.binus.ac.id
io@binus.edu
binus_internationaloffice

CONTRIBUTION

TEACH FOR INDONESIA

**TEACH FOR
INDONESIA**
POWERED BY BINA NUSANTARA

30.481
VOLUNTEER

**NUMBER OF
VOLUNTEERS**

14.611
PESERTA

**NUMBER OF EXT.
PARTICIPANTS**

184
VOLUNTEER

**NUMBER OF
WORKING
PARTNERS**

**NUMBER OF
PROGRAMS**

89
PROGRAM

43 EDUCATION

11 ENVIRONMENT

11 HEALTH

24 WELL-BEING



CONTRIBUTION

BINUS DURING PANDEMIC



BINUS COVID-19 ALERT



**DISINFECTANT
& FOOD DELIVERY
ROBOTS**



BEECARE EMR

**EMERGENCY
HOSPITAL INFORMATION
SYSTEM MANAGEMENT
WISMA ATLET
KEMAYORAN**

BINUS COMMITMENT

HONESTY & ANTI-CORRUPTION



ALL STUDENTS WHO
ARE CAUGHT CHEATING
WILL FACE EXPULSION

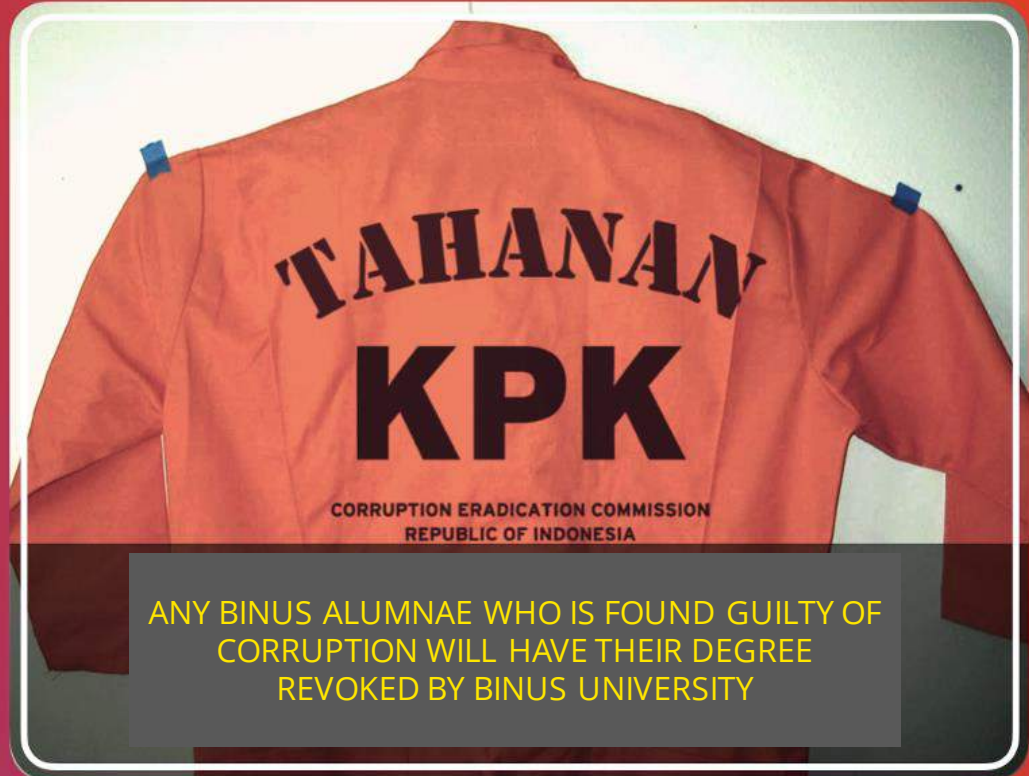
SK REKTOR No. 1426/SK/PTTKK-UBN/VII/2016

SINCE THE PROGRAM WAS
IMPLEMENTED IN 2016,

86

STUDENTS

HAVE BEEN
EXPELLED FOR
MISCONDUCT.



CORRUPTION ERADICATION COMMISSION
REPUBLIC OF INDONESIA

ANY BINUS ALUMNAE WHO IS FOUND GUILTY OF
CORRUPTION WILL HAVE THEIR DEGREE
REVOKED BY BINUS UNIVERSITY

ALUMNI

ENTREPRENEURS



WILSON C. - TI '96
Co-Founder
East Venture Singapore



WILLIAM T. - TI '99
Founder & CEO
Tokopedia



KIEANDY S. L. - SI '92
Director
Indonesia Global Solusindo



ALAMANDA - TIMAT '05
Founder & Pres. Dir.
Binar Academy



YASA S. - MARCOM '13
CEO
Men's Republic



TYOVAN ARI W. - TI '19
CEO
Bahaso.com & HI App



M. JOVAN - BIS '12
Co-Founder & Marketing Lead
TaniHub



KEVIN OSMOND - TI '01
CEO
Printerous



MARCHELLA - DKV '08
Founder
Generasi 90an & NKCTHI

PROFESSIONALS



TRENGGONO - SI '81
Menteri Kelautan dan
Perikanan
Republik Indonesia



LYDIAN S. - SI '92
Country Director
Facebook Indonesia



TAN WIJAYA - TI '97
President Director
IBM Indonesia



HERBERT ANG - TI '92
President Director
Acer Indonesia



SUHARNO TAN - SI '90
Corp. Supply Chain Direktur
Kawan Lama Group



BENNY K. - SI '92
Human Resource Direktur
Kino Indonesia



DENY R. - TI '89
CIO
Asia Pulp & Paper Sinarmas

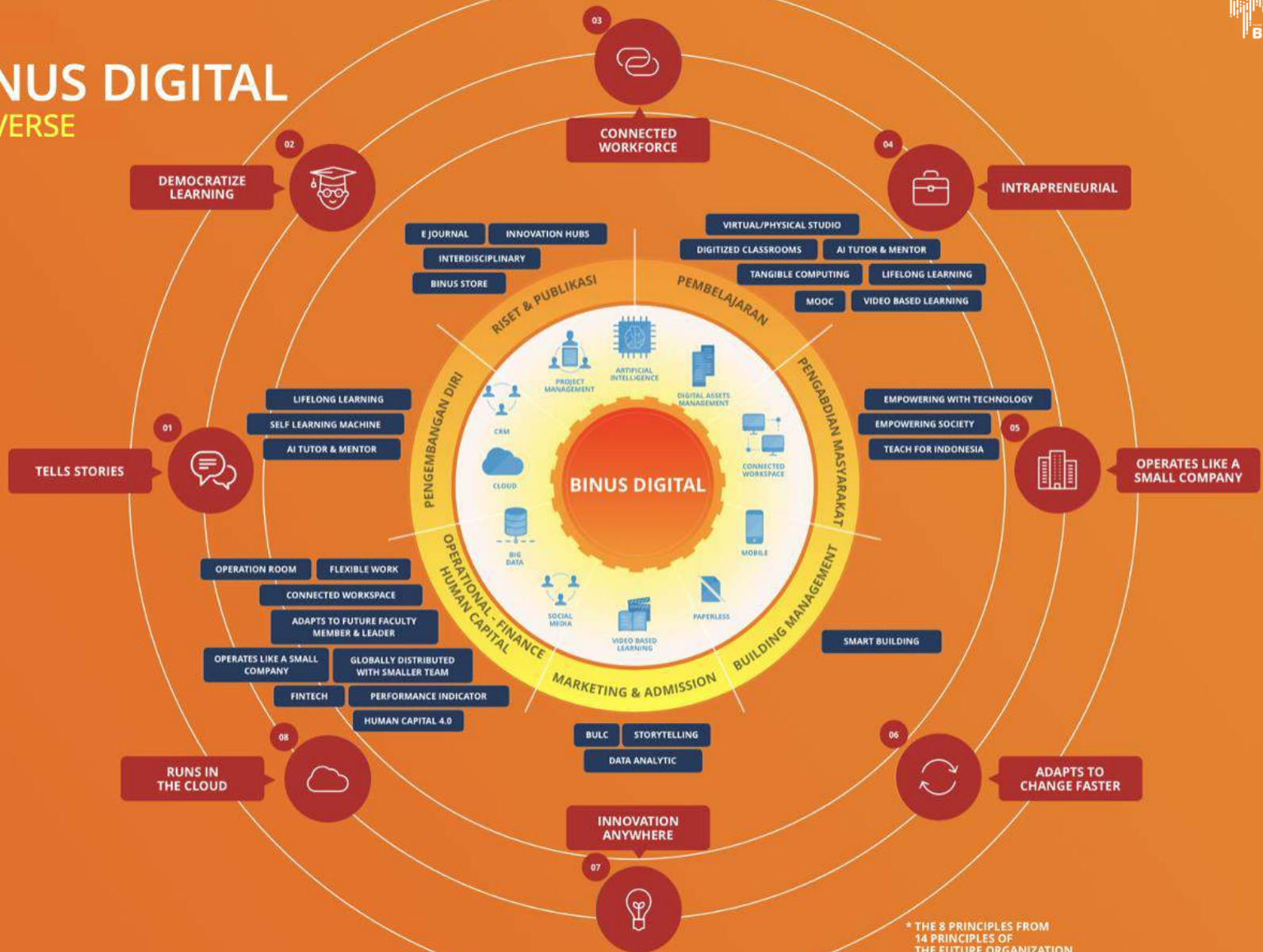


VICTOR ERICO - TK '92
SVP - Group Head Digital
Banking Delivery Bank Mandiri



FIFI V. - SI '91
Dir IT & Online Trading
MNC Securities

BINUS DIGITAL UNIVERSE



* THE 8 PRINCIPLES FROM 14 PRINCIPLES OF THE FUTURE ORGANIZATION

LEARNING MANAGEMENT SYSTEM

BINUSMAYA

Since 2004 BINUS University has been building and developing Binusmaya as a Learning Management System platform. Not only has Binusmaya become the main platform used in many aspects of teaching and learning process, but it also has grown as a multifunctioning portal for all of its stakeholders. Aligned with Student-Centered Learning and Multi-Channel Learning concepts, Binusmaya holds a central role to support students during the teaching and learning process.

To continue the development tradition of LMS in BINUS University, the 7th version of Binusmaya is now in the development stage.

Cloud technology enables Binusmaya services to be more reliable in terms of availability and scalability. Through mobile technology, Binusmaya stakeholders, including students, lecturers, industry, parents, as well as alumni, have become more connected than ever.

Binusmaya will be transformed into Cloud-Native Apps with a microservice concept, where the system will be split into multiple independent and collaborative services.



CLOUD



MOBILE

BINUS 2035



Fostering and empowering the society in building and serving the nation through nurturing exemplary character, advancing knowledge and promoting innovation (creative, process, technology).





THANK YOU!

*Come and Join
The Network!*

Website : binus.ac.id / global.binus.ac.id
Instagram : @binusglobal
Facebook : Binus International Office
E-Magazine : binus.ac.id/hiveindo/





BINUS UNIVERSITY

Anggrek Campus
Jl. Kebon Jeruk Raya No. 27 West
Jakarta 11530 Indonesia
(+62-21) 530 0244

international.binus.ac.id
global.binus.ac.id

