



People
Innovation
Excellence



THE WORLD IS OUR CLASSROOM

GLOBAL - INNOVATIVE - RELEVANT



Admission Brochure for Non-Resident International Students Batch 2021

International Undergraduate Programs in English



Engineering
Accreditation
Commission



t. +6221 534 5830 Ext. 1325
e. global@binus.edu

@BinusGlobal

BINUSUniversity

Binus International

international.binus.ac.id | bbs.binus.ac.id | bnsd.binus.ac.id | binus.ac.id/hiveindo

TABLE OF CONTENTS

BINUS UNIVERSITY INTERNATIONAL	1
Table of Majors and Streamings	
Single and Double Degree Tracks	2
Dual Award Tracks	4
International Undergraduate Programs (in English)	6
Tuition Fees	10
Accommodation and Fees	11
Admission Process and Requirements	13
Application Documents	14
Scholarships	15
Visa Process	16
Living Cost Estimation	17

WELCOME TO BINUS UNIVERSITY INTERNATIONAL

THE OLDEST INTERNATIONAL CAMPUS IN THE COUNTRY!

Since 2001, BINUS UNIVERSITY INTERNATIONAL (BI) has been providing world-class international undergraduate programs delivered fully in English in partnership with the leading foreign higher education institutions in Australia, Asia, Europe and the U.S. As the university's exclusive international campus (JWC and FX) in the Senayan business district, BI hosts double degree (3+1 and 2+2) and dual award (4+0) undergraduate programs of:

AACSB accredited BINUS BUSINESS SCHOOL (BBS)
Faculty of Computing and Media
Faculty of Economics and Communication
BINUS NORTHUMBRIA SCHOOL OF DESIGN (BNSD).

These are 4-year programs running a 3+1 Enrichment Program where students study overseas, volunteer, conduct an internship, research project, or participate in an incubator over 2 semesters to complement their classroom knowledge with real-life experience. On top of that, the hybrid-modular curriculum and CIDER PARK idea incubator facilitate integrative project-based and solution-oriented learning. The following majors are available:

Computer Science
Business Information Systems
Communication
Finance International Program
International Business
Business Management & Marketing
Fashion & Graphic Design.

Streamings (specializations within the major are plentiful.)





BI programs are the oldest international programs in the country with rigorous quality standards. This reputation is spreading internationally with BINUS hosting some 600 visiting international students annually and a growing number of full degree international students coming from over 30 countries around the world, mainly from Asia, Africa, Europe, and the Middle East. Alongside a number of other support departments, dedicated International Student Recruitment unit and International Office support students from the academic and engagement perspective throughout their stay at BINUS.





TABLE OF MAJORS & STREAMINGS* SINGLE AND DOUBLE DEGREE TRACKS

BINUS UNIVERSITY INTERNATIONAL UNDERGRADUATE PROGRAMS IN ENGLISH

Major	Streaming	Degree					
		Single	Title	Double	Title	Partner	
Business Information Systems  	Business Information Systems	v	S.Kom.				
	Business Information Systems			v	S.Kom. & BSc (Hons)	Northumbria University, Newcastle, UK	
	Information Technology			v	S.Kom. & BIT	Queensland University of Technology, Australia	
	International Business			v	S.Kom. & BA	Cologne Business School, Germany	
	Master Track						
	Business Information Systems Master Track (IS/IT Security)				S.Kom. & M.IT/M.ISM	Macquarie University, Australia	
	Business Information Systems Master Track (Commerce)				S.Kom. & MCom/MM	Macquarie University, Australia	
	Business Information Systems Master Track				S.Kom. & M.Sc in CIS	Boston University Metropolitan College, US	
Communications	Entertainment Communications	v	S.I.kom.			Northumbria University, Newcastle, UK	
	Public Relations	v		v	S.I.Kom. & BA (Hons)		
	Journalism	v		v			
Computer Science  	Computer Science	v	S.Kom.				
	Pervasive Games Technology	v					
	Computer Science				v	S.Kom. & BSc (Hons)	Nottingham University, UK
	Artificial Intelligence				v		
	Information Technology				v	S.Kom. & BInfoTech	RMIT University, Australia
	Computer Science				v	S.Kom. & BCompSc	University of Wollongong, Australia
Fashion Design	Fashion Design (4+0 / 3+1)			v	S.Sn & BA (Hons)	Northumbria University, Newcastle, UK	
Fashion Management	Fashion Management (4+0 / 3+1)			v			
Graphic Design & Interactive Digital Media	Graphic Design (4+0 / 3+1)			v			
	Interactive Digital Media (4+0 / 3+1)			v			

* The streamings available based on 2021 academic year.





TABLE OF MAJORS & STREAMINGS* DOUBLE DEGREE TRACKS

BINUS UNIVERSITY INTERNATIONAL UNDERGRADUATE PROGRAMS IN ENGLISH

Major	Streaming				Degree		
		Single	Title	Double	Title	Partner	
Business Management & Marketing	Innovation & Entrepreneurship			v	S.E. & BBus	University of Newcastle, Australia	
	International Business			v	S.E. & BA	Cologne Business School, Germany	
	International Business			v	S.E. & BBA	Saxion University of Applied Science, Netherlands	
	International Hospitality & Tourism Management			v	S.E. & BA (Hons)	Bournemouth University, UK	
	Business & Management			v			
	Marketing			v	S.E. & BCom	Macquarie University, Australia	
	Marketing			v	S.E. & BBus	Queensland University of Technology, Australia	
	Business Administration			v	S.E. & BBA	Solbridge, Woosung University, South Korea	
	Master Track						
	Business Management & Marketing				v	S.E. & MCom	Macquarie University, Australia
Finance	Business Finance			v	S.E. & BCom	University of Newcastle, Australia	
	Strategic Business Finance			v	S.E. & BA	Cologne Business School, Germany	
	Business & FinTech			v	S.E. & BCom	The University of New South Wales, Australia	
	Applied Finance			v		Victoria University of Wellington, New Zealand	
	Master Track						
	International Accounting & Finance (Master)				v	S.E. & MCom	Macquarie University, Australia
International Business	Innovation & Entrepreneurship			v	S.E. & BBus	University of Newcastle, Australia	
	Commerce & Management			v	S.E. & BA (Hons)	Bournemouth University, UK	
	Business Management with Entrepreneurship			v		Edinburgh Napier University, UK	
	International Business			v	S.E. & BA	Cologne Business School, Germany	
	Business Administration			v	S.E. & BBA	Solbridge, Woosung University, South Korea	
	Business Administration			v		Ningbo University, China,	
	Commerce & Management			v	S.E. & BCom	Victoria University of Wellington, New Zealand	
	Commerce & Management			v		University of New South Wales, Australia	
	Master Track						
	Applied Business Analytics				v	S.E. & MSc	Boston University Metropolitan College, US

* The streamings available based on 2021 academic year.



BINUS NORTHUMBRIA SCHOOL OF DESIGN

DESIGN YOUR LIFE HERE



Design SCHOOL OF

MAJOR	STREAMING (4+0 pathway/ 3+1 pathway)	DEGREE
Fashion	<ul style="list-style-type: none"> • Fashion Design • Fashion Management 	<p>DUAL AWARD</p> <p>Bachelor of Arts (S.Sn.) from BINUS and Bachelor of Arts (BA Hons) from Northumbria University, Newcastle upon Tyne, United Kingdom</p>
Graphics Design & New Media	<ul style="list-style-type: none"> • Graphics Design • Interactive Digital Media (IDM) 	

People
Innovation
Excellence



THE UNIVERSITY OF
NEWCASTLE
AUSTRALIA

TWO-DEGREE PROGRAM

4+0

A Special Track for:
**Business Management
& Marketing**
International Business
Finance

#weareinternational
#binusnewcastle

MAJOR	STREAMING	DEGREE
International Business	Innovation & Entrepreneurship	DUAL AWARD Bachelor of Economics (S.E.) from BINUS and Bachelor of Business (BBus) from University of Newcastle, Australia
Business Management & Marketing		
Finance	Finance	DUAL AWARD Bachelor of Economics (S.E.) from BINUS and Bachelor of Commerce (BCom) from University of Newcastle, Australia



f Binus International t @BinusINTL
@BinusInternational @BinusInter
international.binus.ac.id

DEGREE DESCRIPTION

Bachelor of Computer Science (S.Kom) Tracks: single degree, double degree

BINUS UNIVERSITY, born from a modern computer science course in the mid-1970s, is committed to the field of Computer Science in fostering & empowering the society. The program emphasizes the processes, techniques, and tools that go into developing computer-based systems, with specializations in several sectors such as intelligent systems, software engineering, multimedia technology, database systems and network technology. The program is not only concerned with the academic quality, but it also prepares students for their future careers by providing them with opportunities to obtain CEH professional certifications and work experience through industry internships.

There are two distinctive programs that offer Bachelor of Computer Science (S.Kom.) degree:

Business Information System

The ability to be the link between technology and the customers is a rare qualification in IT industry nowadays. Combining international quality curriculum with embedded entrepreneurship and innovation subjects, the program opens to its graduate endless opportunities from being a world-class information system professional to a well-equipped business start-up entrepreneur. The industrial internship program provides students with real experiences in the workplace and leverages their ability to cope with the international working environment. In addition, a series of trips support individual career aspirations and may provide social and professional networks.

Computer Science

The program has a range of focused courses, called streams, at the undergraduate level, including pervasive software engineering, games design & programming, cloud and distributed systems, technopreneurship, intelligent systems, data science, ethical hacking, and more. The program provides the students with the technical, entrepreneurial, and specialized skills needed to develop and design applications across modern platforms, such as cloud, the web, and mobile, in a rapidly changing IT environment. Students experience a vast range of innovative learning processes, including blended learning, experiential, flipped classroom, hackerspace/makerspace and others.

CAREER OUTLOOK

Web Developer, Software Engineer, Network Administrator, Computer Security Professional, Multimedia Systems Developer, Games Developer, Technical Artist, Database Developer, IT Sales Engineer, Business Application Developer, IT Project Planner, Program Analyst.



DEGREE DESCRIPTION

Bachelor of Economics (S.E.)

Tracks: dual award, double degree, master tracks

BINUS enjoys a strong reputation for its business programs resulting partly from its close ties with the industry and continuous international benchmarking efforts. As a result, BINUS BUSINESS SCHOOL (BBS) has been accredited with the highly coveted qualification bestowed on the top business schools around the world by AACSB (Association to Advance Collegiate Schools of Business) in 2019. BBS continues to work in partnership with business schools around the world to offer students the opportunity to enjoy the highest standards of teaching while experiencing the vibrancy of Indonesia's growing economy. Our partnership with the University of Newcastle (UoN), Australia, ranked top 200 in the world and top 10 in Australia for Business and Commerce courses, offers a dual award program (4+0) that provides an opportunity for students to gain both BINUS and UoN degrees at the same time, at a lower cost.

There are three distinctive programs that offer Bachelor of Economics (S.E.) degree, of which the first two fall under BINUS BUSINESS SCHOOL:

Business Management & Marketing

The program emphasizes mastery of key business management and marketing concepts, technology, and tools required by future professionals. The program equips students with basic scientific business management and marketing paradigms, theoretical frameworks, applied skills, and familiarity with contemporary technology to support their competence as future leaders in business. Lecturers maintain continuous cooperation with many first-class companies in Indonesia to ensure relevant guest lectures, internships, and consulting thesis projects.

International Business

International Business program (IB) is designed to encourage students to excel their competencies in business-related content in an international environment particularly in the region of ASEAN. Students will be given the opportunity to join the P2A (Passage to ASEAN) study tour to different ASEAN countries to learn about many things starting from culture, people, social life, economic practices, etc. Students are also exposed to global business applications and practices from around the world. The program is taught by well-qualified academics from some of the most prestigious business schools and with rich industry experience.

Finance

The program is the first in Indonesia to adopt the International Financial Reporting Standards in all Financial Accounting teaching materials and implement the student-centered learning approach to improve critical thinking as well as business communication skills. Built on internationally and professionally benchmarked process for program design and delivery, the program delivers graduates ready to compete on the international stage. Students have access to CIMA and CPA Australia accreditation.

CAREER OUTLOOK

International Brand Manager, Assistant Export Manager or Import Management, Management Trainee in MNCs, Assistant International Marketing Development, Assistant HR in MNCs, Assistant Financial Manager in MNCs, Trade Development Officer, International Account Executive, etc.



Bachelor of Communication (S. Ikom.) Tracks: single degree, double degree

The Communication program at BINUS UNIVERSITY INTERNATIONAL provides extensive knowledge of digital and non-digital communication skills, practices, and technologies as an integral part of creating an efficient message to the target audience in an expanding new media, as well as social, cultural, and ethical knowledge to create responsible communication.

There are three distinctive streams that lead to the Bachelor of Communication (S.Ikom.) degree:

Journalism

The stream covers theories and practices in all aspects of journalism, including writing, interviewing, reporting, editing, broadcasting, basic photography, and videography. Students have an opportunity to interview personalities relevant to current affairs and the field of their passion. Classes such as Media Interview Technique and Broadcast allow with hands-on assignments exploration of the journalism field.

Public Relations

The stream covers theories and practices in all aspects of public relations, including writing for public relations, creating campaigns and projects, and conveying messages to the public. Students have an opportunity to explore press conferences and talk to brand managers in various industries. The Public Relations stream will enable students to explore public relations in creative, corporate, as well as governmental areas.

Entertainment Communications

The stream covers theories and practices in all aspects of entertainment communications such as planning and creating events, writing for the entertainment industry, and doing event promotions. Throughout the studies, the students are given an opportunity to explore the entertainment industry, with a special focus on social media and events. It is about finding or creating income opportunities within the creative industry from an artist's perspective as well as that of a manager.

CAREER OUTLOOK

Corporate Communications Specialist, Digital Marketing Strategist, Journalist, Producer, Creative Director, Event Manager, etc.



DEGREE DESCRIPTION

Bachelor of Arts (S. Sn.) Tracks: dual award

The program is tailored as a dual award program, where all students learn combined units from BINUS and Northumbria University of UK. Upon graduation, students will receive both Bachelor of Arts (S. Sn.) from BINUS and Bachelor of Arts from Northumbria University, Newcastle upon Tyne, United Kingdom.

BINUS Northumbria School of Design (BNSD) is designed in preparing students for professional practice in both corporate and entrepreneurial setting. Supported by excellent well-maintained facilities and labs, our design students can develop their skills and competencies in a high standard learning environment. In helping to launch and expose our students' innovative work to the world, BNSD also takes part and creates yearly events for students to showcase their masterpieces. Selected student work may be showcased during the yearly Jakarta Fashion Week or other design-focused events.

There are two distinctive programs that lead to the Bachelor of Arts (S.Sn.) degree:

Fashion

Fashion is one of the most lucrative industries in the world involving millions of workers. One indispensable role is the creator. To capture buyers in a highly competitive market, fashion designers must challenge creativity in composing new and fresh approaches to energize their products. This undergraduate program is designed for creative thinkers interested in transforming their ideas and vision into fashion design products. Learning is supported with state-of-the-art laboratories such as textile experiment room and the garment production workroom. The Fashion Management students focus on the knowledge of fashion business strategy and promotion, with graduates able to develop both creative products and manage fashion businesses.

Graphics Design & New Media

Everything that needs to be visually communicated to audiences – such as products, services, company images, and campaign messages – needs a graphic design process to create the visual representation of ideas and relay them to audiences for the desired impact. As the advertising industry develops, the need for capable graphic designers is more than ever. Computer labs and the photographic studio are among the laboratories supporting student learning. Interactive Digital Media streaming focuses on producing meaningful experience for people in the new digital media such as web pages, smartphones, UI devices and screen-based interface designs.

CAREER OUTLOOK

Fashion Professional, Fashion Designer, Fashion Consultant, Entrepreneur, Graphic Designer (Graphic Design Houses, Creative Houses, Art Galleries), Brand Development Consultant, Corporate Communication Consultant, Entrepreneur, Freelancer, etc.



NON-RESIDENT TUITION FEES

Undergraduate Programs

BINUS INTERNATIONAL (Single Degree and Dual Award)*

PROGRAM	TOTAL	ESTIMATED PAYMENT SCHEDULE**			
		Year 1	Year 2	Year 3	Year 4
BBS/ Faculty of Computing & Media/ Faculty of Economics & Communication (Single Degree and Dual Award)	USD 40,000	USD 11,000	USD 11,000	USD 11,000	USD 7,000
BINUS Northumbria School of Design (Dual Award)	USD 45,000	USD 12,000	USD 12,000	USD 12,000	USD 9,000

BINUS INTERNATIONAL - DOUBLE DEGREE

Cost at our double degree partner depends on the amount of credits taken.

Please refer to the table below for indicative annual tuition fee at our partner universities.

Major	Indicative Tuition at Partner University for Double Degree (per year)**					
Business Information Systems	Cologne Business School (CBS), Germany EUR 10,980	Queensland University of Technology (QUT), Australia AUD 36,300	(MT) Macquarie University, Sydney, Australia AUD 38,000	Northumbria University, UK, GBP 15,500		
Business Management & Marketing	Cologne Business School (CBS), Germany EUR 10,980	Saxion University, Netherlands EUR 8,800	Queensland University of Technology (QUT), Australia AUD 31,000	Macquarie University, Sydney, Australia. MT: AUD 38,000 DD: AUD 37,500	Solbridge International School of Business, South Korea USD 15,175	
Communications	Northumbria University, UK, GBP 15,500					
Computer Science	University of Nottingham, UK UK, GBP 23,760		RMIT University, Australia AUD 34,500		Wollongong University, Australia AUD 33,168	
Finance	Cologne Business School, Germany, EUR 10,980	University of New South Wales*, Australia, AUD 46,650	Victoria University of Wellington, New Zealand NZD 27,737		(MT) IESEG school of Management, France, EUR 11,145	
International Business	University of New South Wales (UNSW), Australia AUD 45,650		Bournemouth University, UK, GBP 13,750		Ningbo University, China, RMB 18,000	
	Victoria University of Wellington (VUW), New Zealand, NZD 27,200		Cologne Business School (CBS), Germany, EUR 10,380		Solbridge Business School, South Korea, USD 11,600	
Study Abroad/ Single degree	Queensland University of Technology (QUT), Australia, AUD 10,584	University of Queensland (UQ), Australia, AUD 12,900	Macquarie University, Sydney, Australia, AUD 9,100	Victoria University of Wellington (VUW), New Zealand, NZD 14,300	Cologne Business School (CBS), Germany, EUR 5,970	University of York, UK, GBP 8,945
	Solbridge Business School, South Korea USD 7,100	University of Suffolk (UoS), UK, GBP 6,250	Boston University Metropolitan College (BUMC), USA, USD 10,500	UC Berkeley Haas Global, USA, USD 19,900	UCLA Extension, USA USD 19,900	Curtin University, Australia, AUD 10,300

* Fees stated are for new students for 2021/2022. For transfer students, please inquire to us about applicable fees.

** Annual payment schedule may increase

*** Indicative tuition fee for 2021 university partner academic years

ADDITIONAL NOTES

- All students are expected to have access to their own computer.
- Valid health insurance in Indonesia is required.

ACCOMMODATION AND FEES

BINUS Square – Hall of Residence (BSQ)



BINUS SQUARE (BSQ) is run by BINA NUSANTARA FOUNDATION since 2010 providing you with a home away from home comfort. The dormitory accommodates up to 2,500 students and visitors at a reasonable cost and in a comfortable, dynamic and safe environment.

The modern design of your room is the right style for energetic young people. All rooms are provided with:

- Air conditioner
- Internet access (Wi-Fi and LAN)
- Electricity (with a quota of 180 kWh)
- Single-size beds and pillows
- Study desks/lamps, bookshelves, and wardrobe cabinets for each boarder.
- Smoke detector and sprinkler
- Shared bathroom and pantry (for Student Towers Area)

Students can rent this standard accommodation in the Student Towers area. A limited number of twin bedrooms with cable tv, bath amenities (en-suite bathroom), hot water, snack corner and cleaning services are also available to students in the Guest Room area. Guest Rooms can also be rented by visitors.

The following facilities are also available at BSQ:

- Cafeteria with multiple vendors, coffee shop, and 24h mini-market
- Gym, jogging track, and swimming pool
- Laundry service
- Meeting rooms and games room
- 24h service desk and security, CCTV security
- Electronic access control system
- Pantry areas and bathrooms at the end of each floor
- Copy center
- ATM center, etc.

We also provide a shuttle system that links BSQ with BINUS INTERNATIONAL (30-45 minutes to reach BI campus).

Dedicated staff and students run activities under the following four program types: social experience, international experience, personal development, and academic development. Coaching for boarder activities and psychological counselling is also secured.



NON-RESIDENT ACCOMMODATION FEES - in USD*		
ROOM TYPE		SEMESTER PRICE/person
Guest Room Area		
Premium Guest Room (17 m ²)	Single Occupancy	2,500
	Double Occupancy (two boarders/room)	1,700
Student Towers Area		
Single Premium (12 m ²)		1,700
Single Standard (7,5 m ²)		1,400
Double Occupancy (two boarders/room) (12 m ²)		1,150

* Prices are valid for academic year 2021/2022

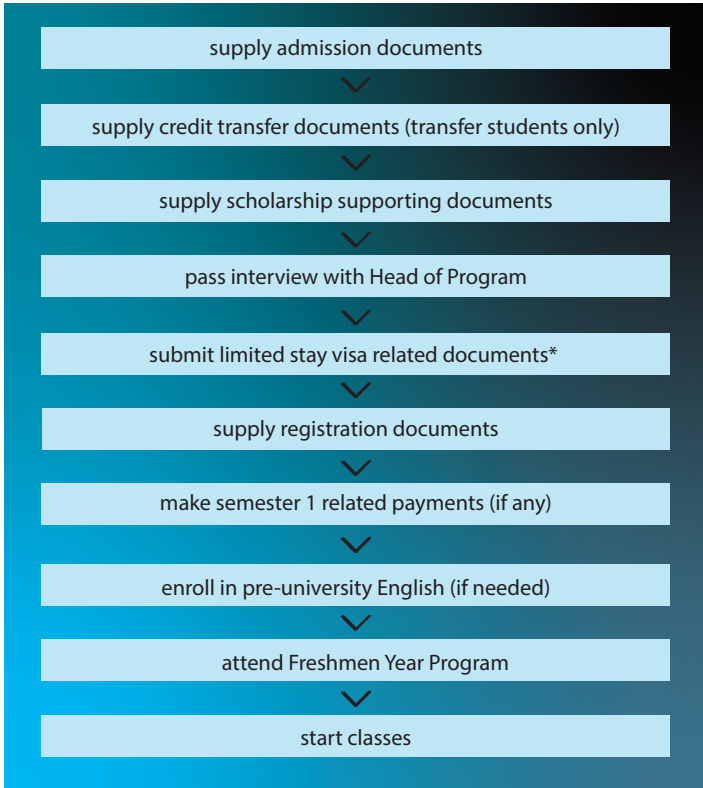
OFF CAMPUS ACCOMODATION

Undergraduate first-year students are encouraged to stay at BINUS Square.

Apartments and student rooms known as 'kost' are off-campus accommodation types available in the residential areas around BINUS campuses. Students can rent apartments or single rooms in the dormitory pavilions and private homes. The prices vary ranging from 50 USD to 300 USD monthly. We can provide a list of recommended kost pavilions. We can also recommend websites advertising apartments for rent.



ADMISSION PROCESS AND REQUIREMENTS



* more information on visa requirements & process can be found on page 16

ADMISSION REQUIREMENTS

High School Graduation - Grade 12 / A Level Certificate / IB Diploma (with relevant background)

English**: IELTS 6.0 (on all components)/ TOEFL 550 / iBT 80 / equivalent

** alternative proof is English as language of instruction in high-school

Students in undergraduate programs with TOEFL scores between 450-549 can enroll after completing 150h of BINUS pre-university English preparatory course.



APPLICATION DOCUMENTS

ADMISSION

1. Admission Form (including statement letters education, regulations compliance, financial competency)*
2. Grade 10-12 academic transcript, high school graduation certificate (diploma) or National Exam certificate
3. English Proficiency Proof
4. Curriculum Vitae
5. Motivation letter
6. Legalized senior high school equivalency certificate from the Indonesian Education Ministry (assisted by BINUS admission staff)**

CREDIT TRANSFER***

1. Academic Transcript
2. Course Syllabi

VISA

Processing length is 2-3 months (please see page 16)

REGISTRATION/ENROLLMENT

1. Confirmation of Acceptance and BINUS Square (BSQ) Application Form
2. Scholarship agreement letter (if applicable)
3. Limited stay visa
4. Health Insurance
5. Proof of pending payments (if any)

NOTES:

* Statement templates are provided by BINUS.

** Equivalency process is not required if the applicant has completed 12 years of formal education and able to provide high school completion certificate/diploma or equivalent.

The process takes 1 month from application to issuance (BINUS can help process)

Senior High Equivalency Requirements:

1. Letter of Statement - Education Background
2. Grade 9 academic transcript and Junior High School (or equivalent) certificate
2. ID photograph 4x6 cm (electronic version; 300 kb)
3. Birth Certificate
4. Color copy of passport personal page (passport should be valid for the full duration of study)
5. Recommendation letter from Indonesian Embassy in Home Country and/or the applicant's Embassy in Indonesia (facilitated by BINUS)

*** Maximum of 50% of courses/credits can be transferred.

SCHOLARSHIPS

BINUS World Class Scholarship rewards international students at undergraduate level demonstrating academic excellence and leadership skills.

The scholarship applies to international undergraduate programs at the Faculty of Computing and Media, the Faculty of Economics and Communication, BINUS Business School, and BINUS Northumbria School of Design.

*for renewal requirements ask our staff

SCHOLARSHIP REQUIREMENTS

1. General admission requirements fulfilled
2. Non-academic achievements and/or work experience
3. GPA 3.0 / 4.0 (75%)
4. IELTS 6.0 (on all components) or equivalent.

SCHOLARSHIP DOCUMENTS

1. Two (2) recommendation letters (teachers/employers/community leaders)
2. Proof of academic and non-academic achievements and/or work experience
3. Portfolio (for Graphic Design and Fashion Management programs)
4. Proof of financial competency beyond scholarship (official letter from bank confirming minimum balance of USD 3,000 in applicant account)

INCLUDED

1. Full tuition fee waiver for 4-year degree program, including Dual Award (4+0) fees
2. Free standard double occupancy room at BINUS Square (BSQ) – Hall of Residence
3. Free bus shuttle service
4. Health benefit
5. Visa and stay permit refund benefit (VITAS/KITAS only)

EXCLUDED

1. Extra semester credit units
2. Course remedial and retake fees
3. Double degree fees
4. Mandatory field trips/out-of-class assignments
5. Language courses
6. Living cost (food & leisure)
7. Books and supplies
8. Flights
9. Refundable BSQ security deposit

Scholarship Application Deadline: April 20

GENERAL ADMISSION DEADLINES FOR ALL PROGRAMS

We encourage applications for September 2021 intake to be submitted before **20 April 2021**.

In Indonesia, there is only 1 intake per year in September for bachelor degree (except for transfer students). Late applicants can be considered on case-by-case basis.

VISA PROCESS AND REQUIREMENTS

STUDY PERMIT REQUIREMENTS

1. Letter of Statement – Financial Competency*
2. Proof of financial competency (official letter from the bank confirming the minimum balance of USD 3000 (for scholarship awardees) or USD 4000 (for non-scholarship application track) in the applicant's account)
3. Letter of Statement – Regulations Compliance*
4. Medical Statement from a certified practitioner with health check and drug test (not older than 2 months)
5. Passport with validity date 30 months before arrival to Indonesia (all pages)
6. Current ITAS/ITAP for ITAS/ITAP holders

TELEX

All required documents have been collected in previous stages.

VITAS REQUIREMENTS (LIMITED STAY VISA)

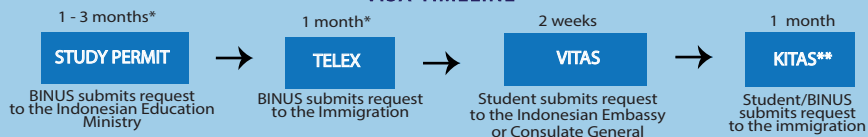
1. Letter of Acceptance (LoA) and guarantee letter from BINUS
2. Study permit
3. TELEX visa
4. Passport

KITAS (LIMITED STAY PERMIT) REQUIREMENTS

Required documents will be communicated upon arrival to Indonesia

*templates provided by BINUS.

VISA TIMELINE



*longer process for calling visa and delicate countries
**after arrival

IMPORTANT NOTES:

Indonesian law does not allow employment of foreigners under student visa.

Students must present themselves to the local governed immigration office to necessarily biometric records and obtain their KITAS

For more visa information, please go to: <http://bit.ly/BINUS-VisalInfo>

ANNUAL LIVING COST

ESTIMATED ANNUAL LIVING COST (in USD)

ITEM	UNIT PRICE	PAYMENT SCHEDULE	ANNUAL COST
Books	150	Per semester	300
Food	150	Monthly	1800
Leisure	100	Monthly	1200
BINUS Student Health Insurance	200	Annual	200
Stay permit	220	Annual	200
Total			3700

Above food and leisure cost is predicted minimum and depends on lifestyle.

All students are expected to have their own computer.

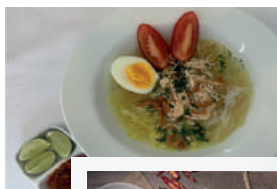
All students are required to have BINUS health insurance unless they can show proof of insurance plan valid in Indonesia.

OTHER COSTS

ITEM	PAYMENT SCHEDULE
Home Country-Jakarta Flight Ticket	as arranged
Socio-cultural VISA and/or VITAS related travel*	based on individual case
Double degree airfare and living cost difference	as arranged
BIPA (Bahasa Indonesia Course)	as arranged
VITAS**	once before arrival
Mandatory field trips and/or study overseas	based on program requirements
Art supplies	based on program requirements
Retake fees	based on program requirements
Graduation fees	as arranged

*students switching sponsor or entering Indonesia on short term visa need to apply for VITAS in a nearby country (process that takes 1 week with related flight and hotel costs); two exits out of the country may be required.

**depending on process






People
Innovation
Excellence





CONTACT:

BINUS Global
BINUS UNIVERSITY
Jl. Kebon Jeruk Raya No.27
Kebon Jeruk, Jakarta Barat 11530
Indonesia
Phone : +62 (0)21 534 5830 Ext. 1325
Email: global@binus.edu
Website: global.binus.ac.id

Follow us:

 [@BinusGlobal](https://www.instagram.com/BinusGlobal)

 [BINUSUniversity](https://www.weibo.com/BINUSUniversity)

 [Binus International](https://www.facebook.com/BinusInternational)