



**WELCOME TO**  
**BINUS UNIVERSITY**

## POPULATION



**630**

**Million**

9% of the world's total population



## COUNTRIES

### MEMBER COUNTRIES

Brunei  
Cambodia  
Indonesia  
Laos  
Malaysia

Myanmar  
Philippines  
Singapore  
Thailand  
Vietnam

## ECONOMY

If ASEAN were a single country,  
it would be the

**7<sup>th</sup>** LARGEST  
economy in the world.

A combined GDP of

**\$2.4tri** (2015)

and projected to double by

**\$4.7tri** (2020)

Ranked as

**4<sup>th</sup>** LARGEST  
Economy by  
(2050)



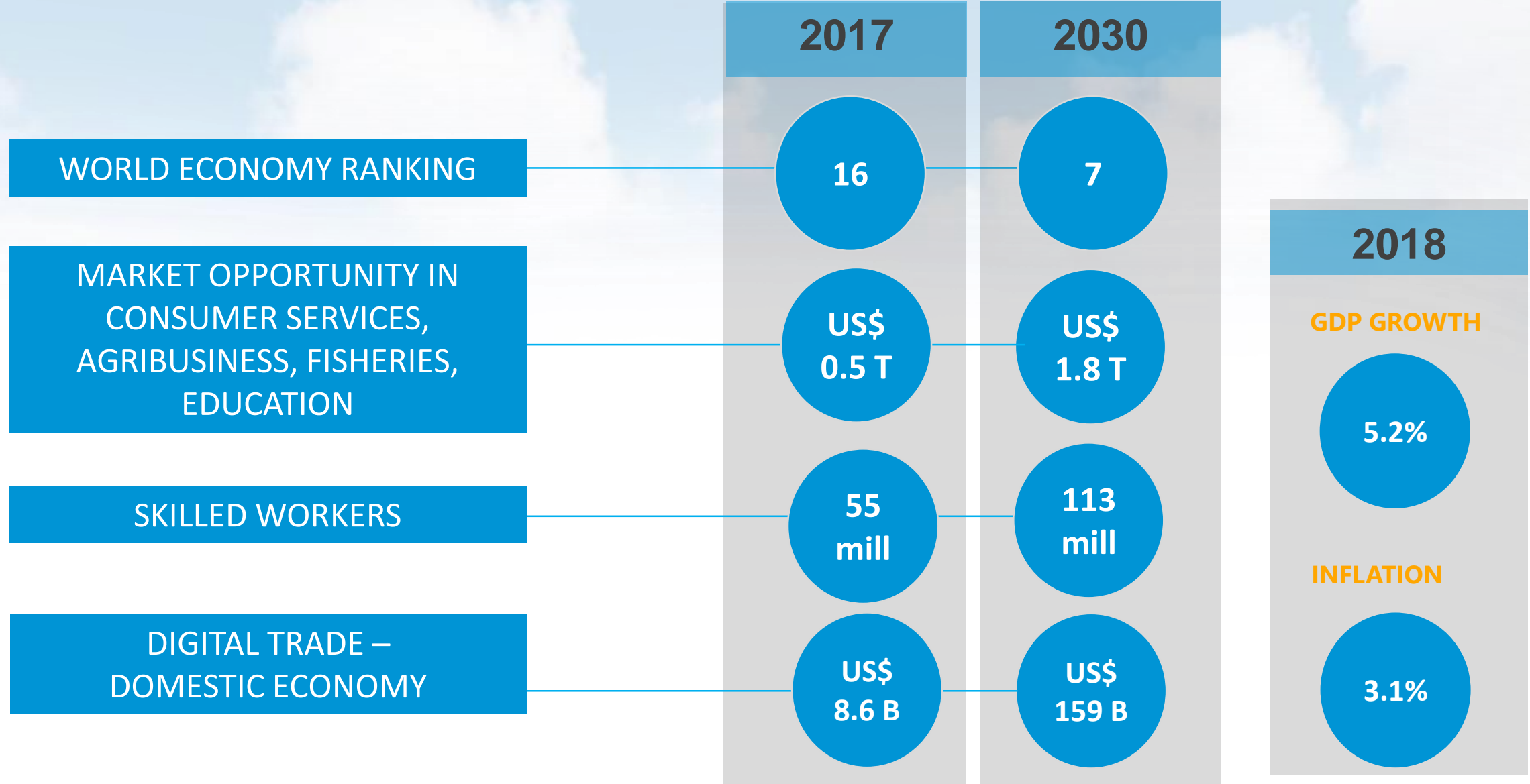
## EDUCATION



**7,000** higher education institutions

**12 million** student enrollment in higher education (2017)

**ASEAN Higher Education Area**



## JAKARTA

Capital city of **Indonesia**

## JAKARTA

21<sup>st</sup> Largest City in the world

## POPULATION

more than **9.6 million**

## A MULTICULTURAL CITY

made up by millions of migrants and visitors; parallels the modernity of a metropolis

Famous for **the traffic, the people, the food, the entertainment, and the shopping malls**



The city is the seat of the **ASEAN** Secretariat

## JAKARTA



## INDONESIA





**Joseph Wibowo  
Hadipoespito**

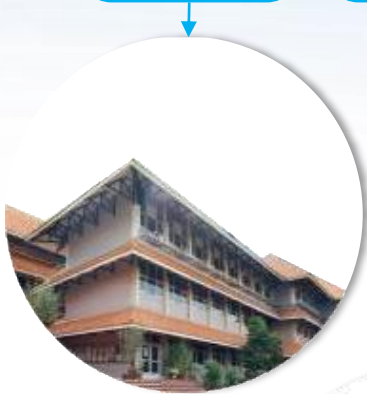


**Dr. Ir. Th. Widia Soerjaningsih, M.M.**  
Rector of BINUS UNIVERSITY (1996 – 2004)



## 1984

SYAHDAN  
CAMPUS  
**1984**



ANGGREK  
CAMPUS  
**1997**



JWC  
CAMPUS  
**2001**



MAIN CAMPUSES

ALAM SUTERA  
CAMPUS  
**2014**



BINUS  
SQUARE  
**2010**



BINUS  
MALANG  
**2016**



BINUS  
BANDUNG  
**2017**



## 2018

BINUS  
BEKASI  
**2018**



BRANCH CAMPUSES

KIJANG CAMPUS  
**1995**

BINUS FX CAMPUS  
**2012**

BINUS ASO CAMPUS  
**2014**



**BINUS UNIVERSITY**  
(Jakarta, Alam Sutera, Bekasi)

**BINUS @ BANDUNG**

**BINUS @ MALANG**

**BINUS UNIVERSITY LEARNING COMMUNITY & BINUS REGIONAL REPRESENTATIVES**





National Agency  
for Higher Education  
Accreditation (BANPT)

*one of A accredited HEI out of 4,718\**



*(by Private High Education – Region III)*

## 7 CATEGORIES

Collaboration	Development	Governance	Student Development	Lecturer Development	Research and Utilization	Field of Engineering	Field of Computing





#234 in Asia





**AACSB**  
**ACCREDITED**

**3<sup>rd</sup>**

Indonesian university internationally  
accredited by ABET  
Undergraduate programs in  
Civil Engineering, Computer Engineering  
and Industrial Engineering



Engineering  
Accreditation  
Commission



**tedQual**  
UNWTO.THEMIS



**Cumulus**

International **Association** of Universities  
and Colleges of Art, Design and Media

**ico-D**

**International  
Council of Design**  
leading creatively



Indonesian Accreditation Board for  
Engineering Education



**11**

CAMPUSES

**318**

CLASSROOMS

**2,500**

BINUS SQUARE  
HALL OF  
RESIDENCE  
CAPACITY

**110,000**

LIBRARY TITLES

**138**

LABS

**22**

LARGE HALLS





**AUDITORIUM**

**BINUS UNIVERSITY**



**BINUS NORTHUMBRIA SCHOOL OF DESIGN**



## WELCOME TO BINUS SQUARE - Hall of Residence

*"A Vibrant and Exciting University Boarding Life"*





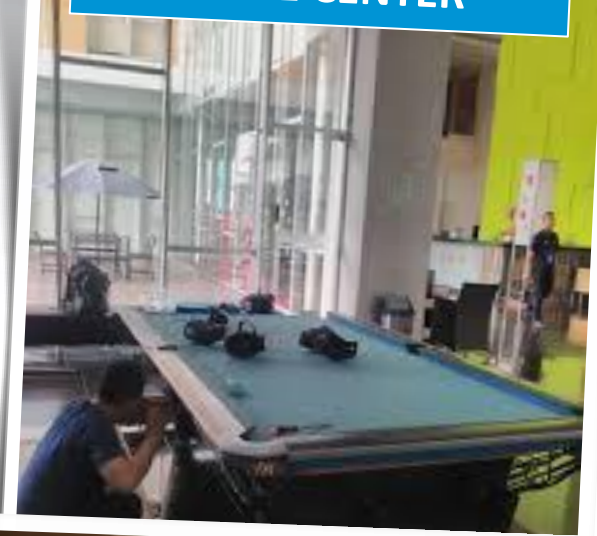
**DOUBLE OCCUPANCY**



**POOL**



**GAME CENTER**



**FOOD COURT**



**CLASS**



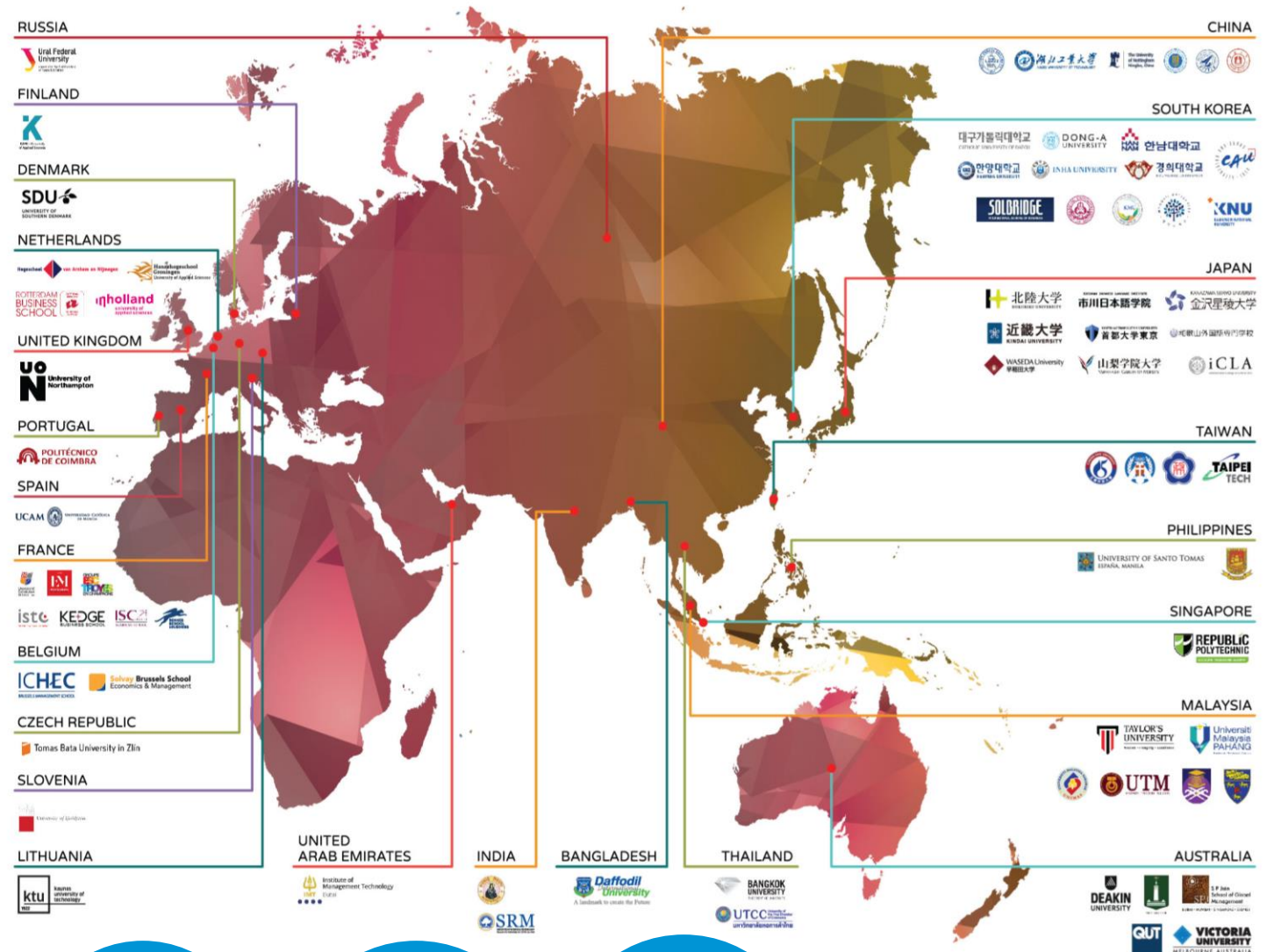
**SINGLE OCCUPANCY**

## STATISTICS 2018

<b>953</b> OUTBOUND STUDENTS	<b>68</b> INT'L LECTURERS	<b>10.246</b> NEW STUDENTS	<b>32.783</b> ACTIVE STUDENTS	<b>1340+</b> COLLABORATION ACTIVITIES W/ INDUSTRY
<b>636</b> VISITING INT'L STUDENTS	<b>90%</b> INT'L EXPERIENCE AT GRADUATION	<b>1248</b> ACTIVE FACULTY	<b>109.538</b> ALUMNI	<b>1001+</b> INT'L COLLABORATION ACTIVITIES



# BINUS UNIVERSITY COLLABORATED PARTNERS



5

CONTINENTS

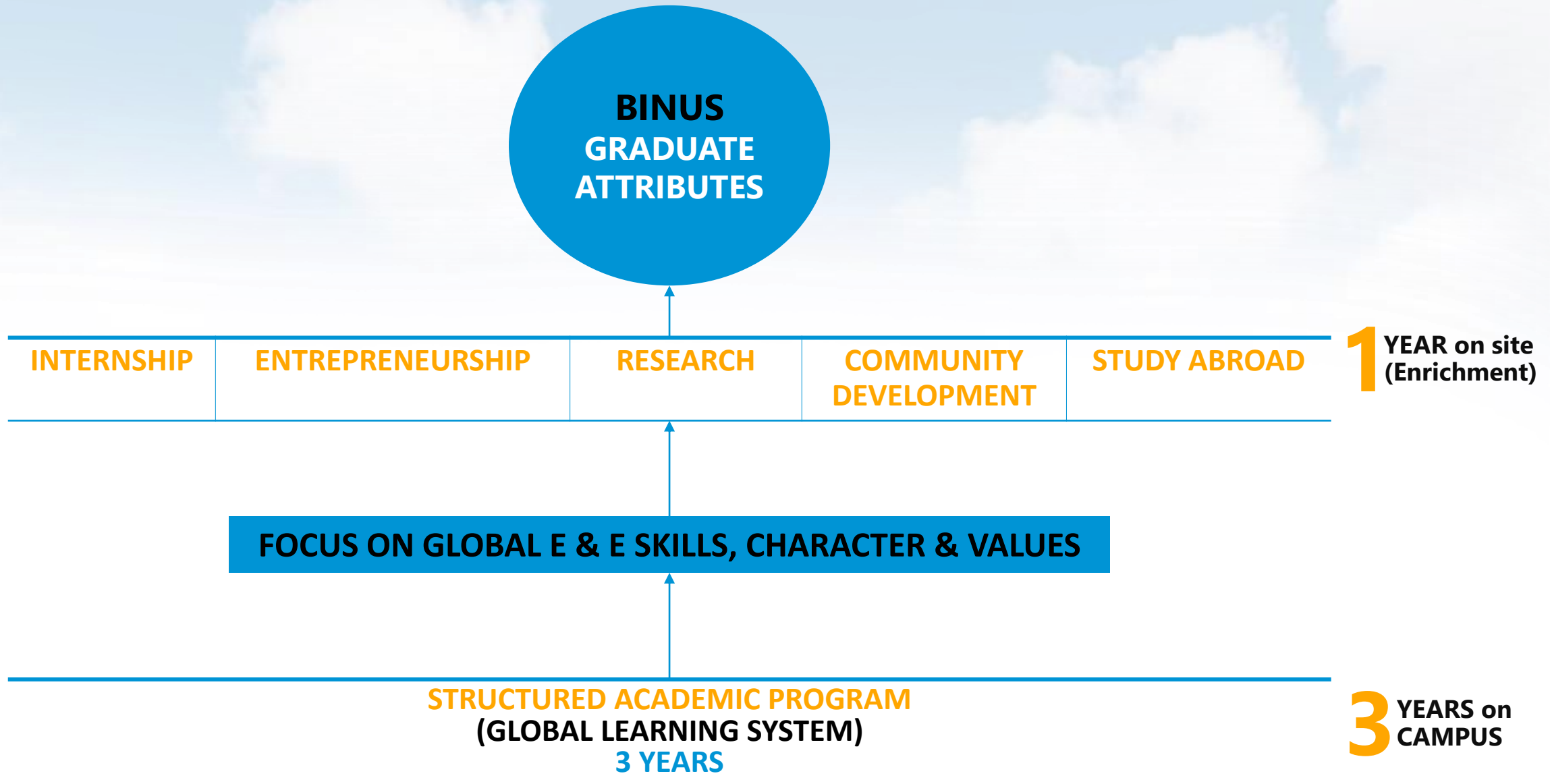
41

COUNTRIES

200+

UNIVERSITIES





<b>BINUS UNIVERSITY</b> <b>Global Class</b>	<b>BINUS NORTHUMBRIA</b> <b>SCHOOL OF DESIGN</b>	<b>BINUS INTERNATIONAL</b>	<b>BINUS ASO SCHOOL OF</b> <b>ENGINEERING</b>
<ul style="list-style-type: none"> <li>• <b>Computer Science</b></li> <li>• <b>International Business Management</b></li> <li>• <b>International Relations</b></li> </ul>	<ul style="list-style-type: none"> <li>• <b>Fashion Design</b></li> <li>• <b>Fashion Management</b></li> <li>• <b>Graphic Design</b></li> <li>• <b>Interactive Digital Media Design</b></li> </ul>	<ul style="list-style-type: none"> <li>• <b>Business Information Systems</b></li> <li>• <b>Communication</b></li> <li>• <b>Computer Science</b></li> <li>• <b>International Accounting &amp; Finance</b></li> <li>• <b>Business Marketing &amp; Management</b></li> <li>• <b>International Business</b></li> </ul>	<ul style="list-style-type: none"> <li>• <b>Automotive &amp; Robotics Engineering</b></li> <li>• <b>Product Design Engineering</b></li> </ul> <div data-bbox="1931 721 2356 1130"> <p><b>15</b> BACHELORS</p> </div>

## KEMANGGISAN

### FACULTY OF ECONOMICS AND COMMUNICATION

- Accounting
- Hotel Management
- Marketing Communication
- Mass Communication

### SCHOOL OF BUSINESS MANAGEMENT

- Business Creation
- Management
- International Marketing
- International Business Management

### SCHOOL OF COMPUTER SCIENCE

- Computer Science
- Cyber Security
- Game Application & Tech
- Mobile Application & Tech
- Computer Science & Mathematics
- Computer Science & Statistics

### SCHOOL OF INFORMATION SYSTEMS

- Accounting Information Systems
- Computerized Accounting
- Information Systems
- Information Systems Audit
- Information Systems & Accounting

### SCHOOL OF DESIGN

- DKV Animation
- DKV Creative Advertising
- DKV New Media
- Interior Design
- Film

### FACULTY OF ENGINEERING

- Architecture
- Civil Engineering
- Computer Engineering
- Industrial Engineering
- Food Technology

### FACULTY OF HUMANITIES

- Business Law
- Chinese
- English
- Japanese
- International Relations
- Primary Teacher Education
- Psychology

## ALAM SUTERA

### FACULTY OF ECONOMICS AND COMMUNICATION

- Finance
- Marketing Communication
- Mass Communication

### SCHOOL OF BUSINESS MANAGEMENT

- International Business Management.
- International Marketing
- Management

### SCHOOL OF COMPUTER SCIENCE

- Information Technology

### SCHOOL FOR INFORMATION SYSTEMS

- Information System

### SCHOOL OF DESIGN

- DKV Animation
- DKV New Media

### FACULTY OF ENGINEERING

- Food Technology

## BINUS BEKASI

### BACHELOR PROGRAMS

- Accounting
- Business Information Technology
- Business Management

### DIPLOMA IV

- Business Hotel Management (D4)

## BINUS ONLINE

### BACHELORS

- Accounting
- Business Management
- Information Systems – Corporate Information Systems
- Computer Science

### DIPLOMAS

- Computerized Accounting

### BACHELORS (DIPLOMA EXTENSION PROGRAMS)

- Accounting
- Business Management
- Information Systems

**57**  
BACHELORS  
+ **5**  
DIPLOMAS  
&  
EXTENSIONS





6

BACHELOR  
PROGRAMS

## BINUS MALANG

### Programs

- Business Creation
- Computer Science
- Interior Design
- Communication
- Public Relation
- Visual Communication Design (DKV)



3

BACHELOR  
PROGRAMS

## BINUS BANDUNG

### Programs

- Computer Science
- Visual Communication Design
- Interior Design

8

MASTER  
PROGRAMS  
IN  
INDONESIAN

## **BINUS GRADUATE PROGRAMS**

Master in Accounting Program

Master in Information Systems  
Management

Master in Information Technology

Master in Industrial Engineering

Master in Strategic Marketing  
Communication

## **BINUS BUSINESS SCHOOL**

MM Professional in Business Management

MM Executive in Strategic Management

## **BINUS BUSINESS SCHOOL**

MM in Creative Marketing

MM Young Professional in Business Management

MM in Business Management – Blended Learning

2

DOCTORATE  
PROGRAMS

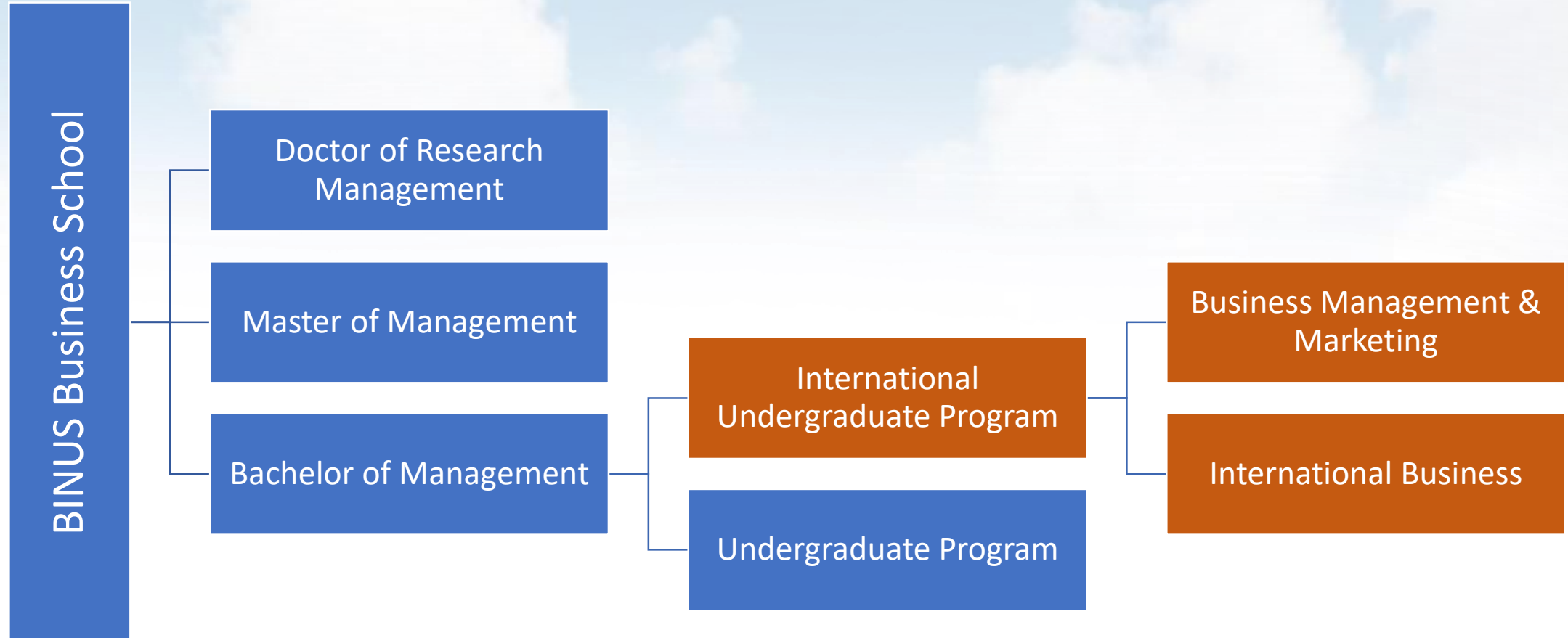
## **BINUS DOCTORATE PROGRAM**

Doctor of Computer Science

Doctor of Research in Management

2

MASTER  
PROGRAMS  
IN ENGLISH





## JOINT DEGREE – BACHELOR LEVEL

Country	Partner	Degree
Australia	Deakin University	Bachelor of Information Technology Bachelor of Computer Science
	Macquarie University	Bachelor of Commerce
	Queensland University of Technology (QUT)	Bachelor of Information Technology Bachelor of Business
	RMIT University	Bachelor of Information Technology
	The University of New South Wales (UNSW)	Bachelor of Commerce
	University of Wollongong	Bachelor of Computer Science
China	Ningbo University (NBU)	Bachelor of Business Administration
France	Institut Des Strategies et Techniques de Communication	Bachelor of Law; Bachelor of Economics and Management (Communication Courses)
Germany	Cologne Business School	Bachelor of Art

Country	Partner	Degree
Korea	SolBridge International School of Business	Bachelor of Business Administration
Netherlands	Saxion University of Applied Science	Bachelor in Marketing
New Zealand	Auckland University of Technology (AUT)	Bachelor of Computer and Information Sciences
	Victoria University of Wellington (VUW)	Bachelor of Commerce
United Kingdom	Bournemouth University	BA (Hons) Business and Management
	Northumbria University	BSc(Hons) Business Information Systems, Bachelor of Art (Hons)
	Nottingham University (UK & Malaysia)	Bachelor of Science (Hons)
	Edinburgh Napier University	BA (Hons) Business and Management

## MASTER TRACK PROGRAM

Country	Partner	Degree
Australia	Macquarie University	Master of Commerce
France	IESEG	Master Grande Ecole

## JOINT DEGREE – MASTER LEVEL

Country	Partner	Degree
Australia	Macquarie University	Master of Commerce
France	Burgundy School of Business	Master in Management
Korea	SolBridge International School of Business	Master of Business Administration

SCHOOL / FACULTIES	7		
AFFILIATIONS	2		
DEGREE TYPE	BAHASA	ENGLISH	TOTAL
BACHELOR	61	15	76
MASTERS	8	2	10
DOCTORATE	2		2



## RESEARCH INTEREST GROUP (RIG)

<b>RIG</b> <b>PHOTONICS AND COMPUTER SIMULATION</b>	<b>RIG</b> <b>PERFORMANCE EXCELLENCE</b>	<b>RIG</b> <b>INTELLIGENT AND ADVANCE SYSTEM</b>
<b>RESEARCH FIELD</b> <ul style="list-style-type: none"> <li>• Photonics;</li> <li>• Lase Induced Breakdown Spectroscopy;</li> <li>• Control System;</li> <li>• Laser Applications.</li> </ul>	<b>RESEARCH FIELD</b> <ul style="list-style-type: none"> <li>▪ Business Process Management with BPI and BPR of Business, Government and Public Service for Performance Excellence;</li> <li>▪ Integrated Model of Food Security System;</li> <li>▪ Guidance on Integrated Coastal management and Capacity Building on Climate Change Adaptation in urban and Tourism Area;</li> <li>▪ New Design of Transportation facilities and procedures based on Human Factor and Ergonomic Principles.</li> </ul>	<b>RESEARCH FIELD</b> <ul style="list-style-type: none"> <li>▪ Computational Intelligence;</li> <li>▪ Knowledge Engineering;</li> <li>▪ Advance System.</li> </ul>
<b>CONTACT</b> <b>Dr. Hedwig</b> <a href="mailto:rinda@binus.edu">rinda@binus.edu</a>	<b>CONTACT</b> <b>Bachtiar H. Simamora M.Sc. Ph.D</b> <a href="mailto:bsimamora@binus.edu">bsimamora@binus.edu</a>	<b>CONTACT</b> <b>Dr. Ford Lumban Gaol</b> <a href="mailto:fgaol@binus.edu">fgaol@binus.edu</a>
<b>WEBSITE</b> <a href="http://research.binus.ac.id/rigpcs">research.binus.ac.id/rigpcs</a>	<b>WEBSITE</b> <a href="http://research.binus.ac.id/pex">research.binus.ac.id/pex</a>	<b>WEBSITE</b> <a href="http://research.binus.ac.id/intelligent-and-advance-system">research.binus.ac.id/intelligent-and-advance-system</a>



## RESEARCH INTEREST GROUP (RIG)

RIG <b>FOOD BIOTECHNOLOGY</b>	RIG <b>EDUCATION TECHNOLOGY</b>	RIG <b>BEE - EMBEDDED</b>
<b>RESEARCH FIELD</b> Plant biotechnology for the development of healthy functional foods and medicines.	<b>RESEARCH FIELD</b> Facilitating learning and improving education performance by creating, using, and managing appropriate technological processes and resources to deliver continuous education.	<b>RESEARCH FIELD</b> <ul style="list-style-type: none"> <li>▪ Development of food security (IoT-based smart farming);</li> <li>▪ Information and communications Technology (ICT);</li> <li>▪ Embedded system for automation and control system.</li> </ul>
<b>CONTACT</b> <b>Dr. Nesti F. Sianipar, S.P. M.SI</b> <a href="mailto:nsianipar@binus.edu">nsianipar@binus.edu</a>	<b>CONTACT</b> <b>Prof. Dr. Sasmoko. M. Pd.</b> <a href="mailto:sasmoko@binus.edu">sasmoko@binus.edu</a>	<b>CONTACT</b> <b>Dr. Suryadiputera Liawatimena</b> <a href="mailto:suryadi@binus.edu">suryadi@binus.edu</a>
<b>WEBSITE</b> <a href="https://research.binus.ac.id/food-biotech">research.binus.ac.id/food-biotech</a>	<b>WEBSITE</b> <a href="https://research.binus.ac.id/edutech">research.binus.ac.id/edutech</a>	<b>WEBSITE</b> <a href="https://research.binus.ac.id/2011/08/bee-embedded-research-interest-group">research.binus.ac.id/2011/08/bee-embedded-research-interest-group</a>

## RESEARCH INTEREST GROUP (RIG)

RIG BUSINESS RISK MANAGEMENT	RIG CULTURAL & TOURISM	RIG CROSS CULTURAL COMMUNICATION
<b>RESEARCH FIELD</b> Focus through sustainability lens with a long-term goal to produce an export system in business risks that can be updated for an utilized by BINUS partner practitioners.	<b>RESEARCH FIELD</b> <ul style="list-style-type: none"> <li>• Social interest and tourism perceptions regarding to ethics, values attitudes to nature, sustainability, technology, and society;</li> <li>• The way tourism are created and changed in various cultural, political, industrial, community and institutional.</li> </ul>	<b>RESEARCH FIELD</b> <ul style="list-style-type: none"> <li>• Research with experimental method and participant observation in branding, digital media, family and cultural communication and information technology as media of communication</li> <li>• Research using interpretive, survey method and Media online base on big data Technology</li> </ul>
<b>CONTACT</b> Dr. Dewi Fitriasari, CSRA, CMA. <a href="mailto:dfitriasari@binus.edu">dfitriasari@binus.edu</a>	<b>CONTACT</b> Dr. Vitria Ariani, A. Par. M.Sc <a href="mailto:variani@binus.edu">variani@binus.edu</a>	<b>CONTACT</b> Dr. Ulani Yunus <a href="mailto:uyunus@binus.edu">uyunus@binus.edu</a>
<b>WEBSITE</b> null	<b>WEBSITE</b> null	<b>WEBSITE</b> <a href="http://research.binus.ac.id/crosscomm/">http://research.binus.ac.id/crosscomm/</a>

---

## RESEARCH CENTER (RC)

---

### RIG

### BIOINFORMATIC & DATA SCIENCE

---

### RESEARCH FILED

- Web-apps Database
  - Programming Algorithms
  - Statistic Mathematics
  - Medicine Biology
- 

### CONTACT

**Dr. Bens Pardamean**

[bpardamean@binus.edu](mailto:bpardamean@binus.edu)

---

### WEBSITE

null

---





**3.118**

**SCOPUS  
INDEXED**

**3.118**

**Scopus  
Indexed**

**7**

**NATIONAL  
ACCREDITED  
JOURNALS**

**1**

**RESEARCH  
CENTERS**

**+**

**9**

**RESEARCH  
INTEREST  
GROUPS**



**65.86 BILLION**  
**RESEARCH GRANT in RUPIAH**  
**2015-2019**

## Architecture Short Course

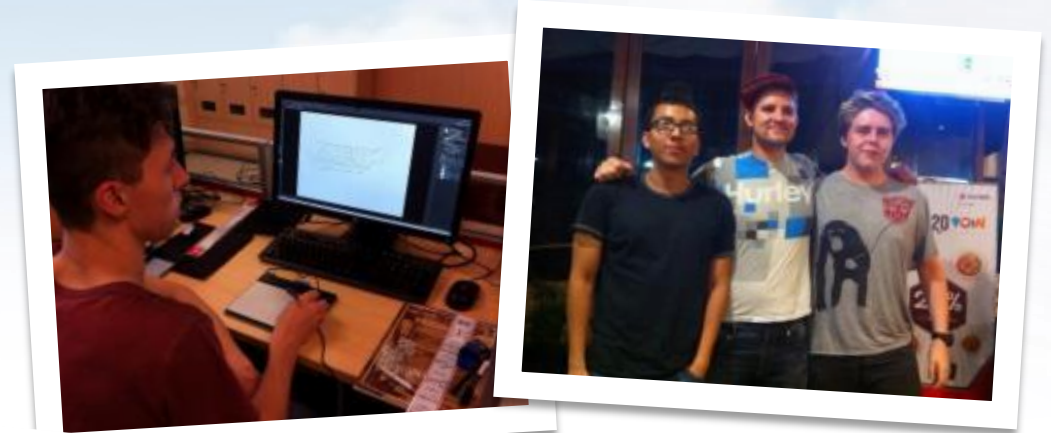
- The Polytechnic University Milan
- Deakin University
- International Islamic University Malaysia

## Games Application and Technology Short Course

- Coventry University
- Deakin University

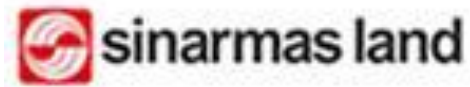
## International Marketing Short Course

- King's College London



**Deakin University**

Games Application & Technology  
Short Course





## SHORT COMMUNITY DEVELOPMENT PROJECT

- Donator
- Education Volunteer
- Social Volunteer for natural disaster and community service
- Creative Thinker

Handicraft Event at Rusunawa Flamboyan, Cengkareng, Jakarta





**THANK YOU!**

*Come and Join  
The Network!*

Website  
Instagram  
Facebook  
E-Magazine

: [binus.ac.id](http://binus.ac.id) / [global.binus.ac.id](http://global.binus.ac.id)  
: @binusglobal  
: Binus International Office  
: [binus.ac.id/hiveindo/](http://binus.ac.id/hiveindo/)

